

**Annual Financial Report**  
**Accuracy Certification Statement**

For Fiscal Year Ending  
**6/30/2016**

Pennsylvania Department of Education  
&  
Office of Comptroller Operations

PDE-2056: Intermediate Unit  
PDE-2057: School District, AVTS/CTC, Charter School,  
and Special Program Jointure

**CERTIFICATION: By signing this page I agree that the electronic data submitted is a complete and accurate statement of the financial operations and status of the local education agency for the fiscal year. It has been prepared in accordance with generally accepted accounting principles and established Commonwealth of PA reporting guidelines.**

\_\_\_\_\_  
Chief School Administrator Signature

\_\_\_\_\_  
Date

\_\_\_\_\_  
Board Secretary Signature

\_\_\_\_\_  
Date

Susan Vincent

\_\_\_\_\_  
Contact Person

svincent@cbsd.org

\_\_\_\_\_  
Contact Person E-mail Address

(267)893-2077      Ext :

\_\_\_\_\_  
Contact Person Telephone Number

(267)893-5800

\_\_\_\_\_  
Contact Person Fax Number

**Audit Certification**  
**Annual Financial Report:**  
For Fiscal Year Ending **6/30/2016**  
**(Pursuant to PA School Code Section 218(b))**

LEA Name : Central Bucks SD  
AUN Number : 122092102  
County : Bucks

<b>Audit Certification Due:</b> 12/31/2016
---

This certification is applicable to:

- Orig. Annual Financial Report submitted to Comptroller Operations:** \_\_\_\_\_  
Date
  
- Annual Financial Report revisions submitted on:** \_\_\_\_\_  
Date

**Auditing Firm:**

**Auditor Contact Name:**

**Auditor Phone:**

**Auditor E-mail:**

CERTIFICATION: By signing this page I agree that the financial statements of the school have been properly audited as noted above pursuant to Article XXIV, and in the auditor's professional opinion, the Annual Financial Report (PDE-2057) submitted on the date referenced is materially consistent with the audited financial statements.

**Chief School Administrator**

**Board Secretary**

\_\_\_\_\_  
Signature

\_\_\_\_\_  
Date

\_\_\_\_\_  
Signature

\_\_\_\_\_  
Date

Susan Vincent

\_\_\_\_\_  
Contact Person

svincent@cbsd.org

\_\_\_\_\_  
Contact Person E-mail Address

(267)893-2077

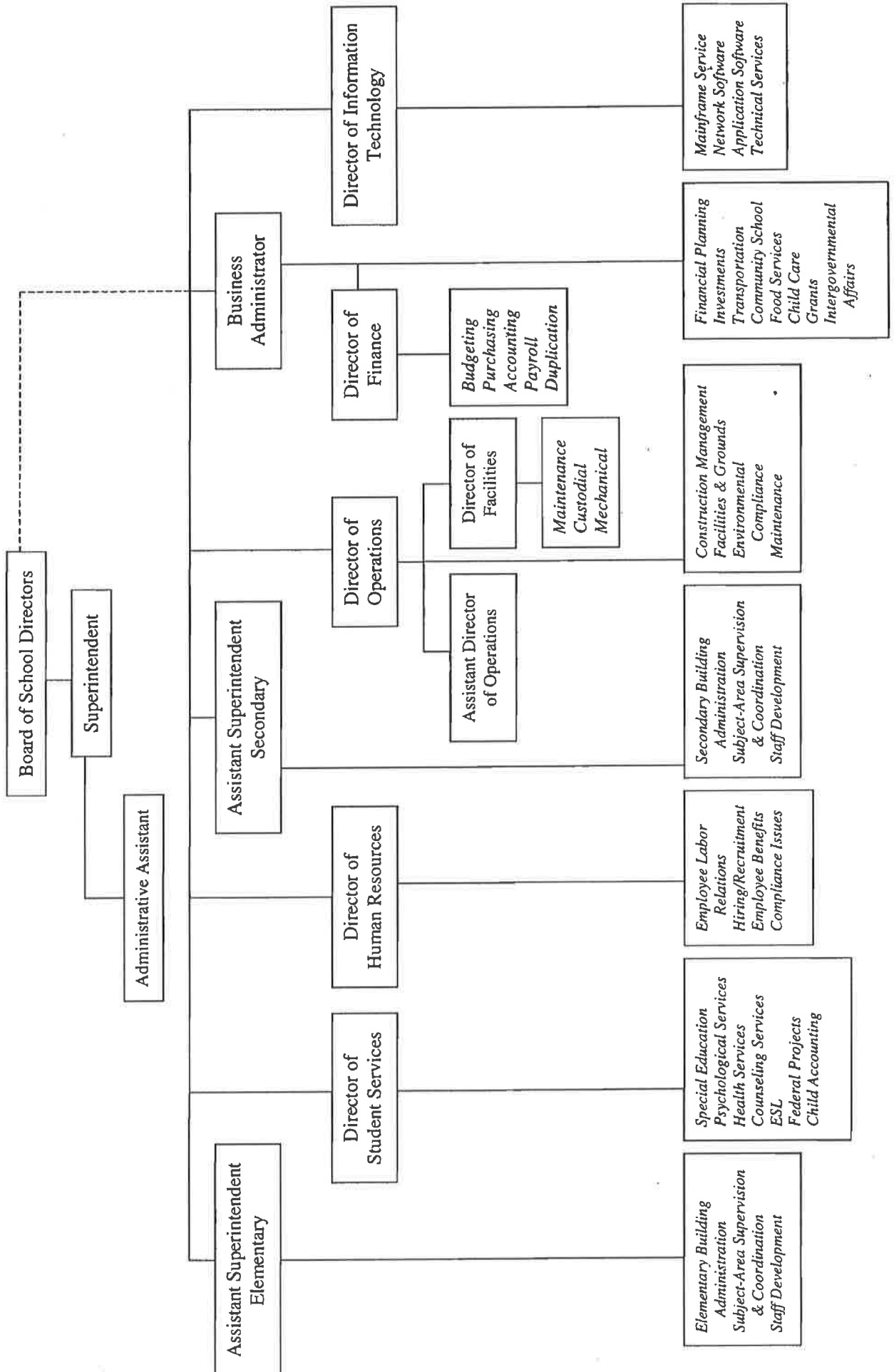
Ext :

\_\_\_\_\_  
Contact Person Telephone Number

(267)893-5800

\_\_\_\_\_  
Contact Person Fax Number

# Central Bucks School District Organization Chart



<u>Val Number</u>	<u>Description</u>	<u>Justification</u>
50290	SOIN: Current Year AFR amount must equal Prior Year AFR amount.  SOIN, Beg Bal, Auth Bldg Obl: \$0.00 PY Ending Bal, Auth Bldg Obl: \$7,332,090.00	Middle Bucks Area Vocational Technical School Authority reports our portion of their outstanding bonds on their AFR. Therefore we will not be reporting the outstanding MBIT bonds on our AFR.
50450	SESS - 2350 Legal and Accounting Services: SESS Schedule amounts for Special Education vary from prior year by 40% or more. Correct the data or enter a justification.  SESS Schedule 2350: \$59,012.67 Prior Year SESS Schedule 2350: \$141,328.79	Legal expenditures for Special Education decreased by \$82,316.12 (42%) from the 14/15 school year.

Amounts Expressed in Whole Dollars

<u>General Fund</u>	<u>Public Purpose Trust</u>	<u>Other Compt Approved</u>	<u>Athletic / Activity</u>	<u>Capital Reserve (690.</u>
<u>(10)</u>	<u>(27)</u>	<u>(28)</u>	<u>(29)</u>	<u>1850)</u>
				<u>(31)</u>

**Assets And Deferred Outflows Of Resources**

**Assets**

0100 Cash and Cash Equivalents	47,862,946
0110 Investments	3,245,000
0120 Taxes Receivable	7,898,549
0130 Due From Other Funds	
0141 Due From Other Governments	
0142 State Revenue Receivable	10,757,807
0143 Federal Revenue Receivable	948,979
0145 Other Intergovernmental Revenue Receivable	
0146 Due from Primary Government	
0147 Due from Component Unit	
0150 Other Receivables	444,439
0170 Inventories	44,713
0180 Prepaid Expenses (Expenditures)	4,477,157
0190 Other Current Assets	

**Total Assets** **\$75,679,590**

0910 Deferred Outflows of Resources

**Total Assets And Deferred Outflows Of Resources** **\$75,679,590**

Amounts Expressed in Whole Dollars

	<u>Capital Reserve (1431)</u> <u>(32)</u>	<u>Other Capital Projects</u> <u>Fund</u> <u>(39)</u>	<u>Debt Service</u> <u>(40)</u>	<u>Permanent</u> <u>(90)</u>	<u>Total Governmental</u> <u>Funds</u>
<b>Assets And Deferred Outflows Of Resources</b>					
<b>Assets</b>					
0100 Cash and Cash Equivalents		725,699			48,588,645
0110 Investments		15,399,285	19,655,650		38,299,935
0120 Taxes Receivable					7,898,549
0130 Due From Other Funds		5,227			5,227
0141 Due From Other Governments					
0142 State Revenue Receivable					10,757,807
0143 Federal Revenue Receivable					948,979
0145 Other Intergovernmental Revenue Receivable					
0146 Due from Primary Government					
0147 Due from Component Unit					
0150 Other Receivables					444,439
0170 Inventories					44,713
0180 Prepaid Expenses (Expenditures)					4,477,157
0190 Other Current Assets					
<b>Total Assets</b>		<b>\$16,130,211</b>	<b>\$19,655,650</b>		<b>\$111,465,451</b>
0910 Deferred Outflows of Resources					
<b>Total Assets And Deferred Outflows Of Resources</b>		<b>\$16,130,211</b>	<b>\$19,655,650</b>		<b>\$111,465,451</b>

Amounts Expressed in Whole Dollars

<u>General Fund</u>	<u>Public Purpose Trust</u>	<u>Other Compt Approved</u>	<u>Athletic / Activity</u>	<u>Capital Reserve (690.</u>
<u>(10)</u>	<u>(27)</u>	<u>(28)</u>	<u>(29)</u>	<u>1850)</u>
				<u>(31)</u>

**Liabilities And Deferred Inflows Of Resources And Fund Balances**

**Liabilities**

0400 Due to Other Funds	33,939
0411 Due to Other Governments	
0412 Due to Primary Government	
0413 Due to Component Unit	
0420 Accounts Payable	5,981,475
0430 Contracts Payable	
0440 Current Portion of Long-Term Debt	
0450 Short-Term Payables	
0461 Accrued Salaries and Benefits	1,309,740
0462 Payroll Deductions and Withholding	26,416,478
0480 Unearned Revenues	6,914,840
0490 Other Current Liabilities	

<b>Total Liabilities</b>	<b>\$40,656,472</b>
--------------------------	---------------------

0950 Deferred Inflows of Resources

**Fund Balances**

0810 Nonspendable Fund Balance	4,521,870
0820 Restricted Fund Balance	
0830 Committed Fund Balance	
0840 Assigned Fund Balance	11,864,592
0850 Unassigned Fund Balance	18,636,656

<b>Total Fund Balances</b>	<b>\$35,023,118</b>
----------------------------	---------------------

<b>Total Liabilities, Deferred Inflows Of Resources And Fund Balances</b>	<b>\$75,679,590</b>
---	---------------------

Amounts Expressed in Whole Dollars	<u>Capital Reserve (1431)</u> <u>(32)</u>	<u>Other Capital Projects</u> <u>Fund</u> <u>(39)</u>	<u>Debt Service</u> <u>(40)</u>	<u>Permanent</u> <u>(90)</u>	<u>Total Governmental</u> <u>Funds</u>
<b>Liabilities And Deferred Inflows Of Resources And Fund Balances</b>					
<b>Liabilities</b>					
0400 Due to Other Funds					33,939
0411 Due to Other Governments					
0412 Due to Primary Government					
0413 Due to Component Unit					
0420 Accounts Payable		862,046			6,843,521
0430 Contracts Payable					
0440 Current Portion of Long-Term Debt					
0450 Short-Term Payables					
0461 Accrued Salaries and Benefits					1,309,740
0462 Payroll Deductions and Withholding					26,416,478
0480 Unearned Revenues					6,914,840
0490 Other Current Liabilities					
<b>Total Liabilities</b>		<b>\$862,046</b>			<b>\$41,518,518</b>
0950 Deferred Inflows of Resources					
<b>Fund Balances</b>					
0810 Nonspendable Fund Balance					4,521,870
0820 Restricted Fund Balance					
0830 Committed Fund Balance		4,759,887			4,759,887
0840 Assigned Fund Balance		10,508,278	19,655,650		42,028,520
0850 Unassigned Fund Balance					18,636,656
<b>Total Fund Balances</b>		<b>\$15,268,165</b>	<b>\$19,655,650</b>		<b>\$69,946,933</b>
<b>Total Liabilities, Deferred Inflows Of Resources And Fund Balances</b>		<b>\$16,130,211</b>	<b>\$19,655,650</b>		<b>\$111,465,451</b>



Amounts Expressed in Whole Dollars	<u>General Fund</u> <u>(10)</u>	<u>Public Purpose Trust</u> <u>(27)</u>	<u>Other Compt Approved</u> <u>(28)</u>	<u>Athletic / Activity</u> <u>(29)</u>	<u>Capital Reserve (690.</u> <u>1850)</u> <u>(31)</u>
<b>Revenues</b>					
6000 Revenue from Local Sources	252,693,316				
7000 Revenue from State Sources	60,915,428				
8000 Revenue from Federal Sources	1,725,342				
<b>Total Revenues</b>	<b>\$315,334,086</b>				
<b>Expenditures</b>					
1000 Instruction	168,365,492				
2000 Support Services	84,885,101				
3000 Operation of Non-Instructional Services	6,468,368				
4000 Facilities Acquisition, Construction and Improvement Services					
5110 Debt Service	19,560,144				
5130 Refund of Prior Year Revenues / Receipts					
5140 Short-Term Borrowing – Interest and Costs					
<b>Total Expenditures</b>	<b>\$279,279,105</b>				
<b>Excess (Deficiency) Of Revenues Over Expenditures</b>	<b>\$36,054,981</b>				
<b>Other Financing Sources (Uses)</b>					
9110 Face Value of Bonds Issued					
9120 Proceeds from Refunding of Bonds					
9130 Bond Premiums					
9200 Proceeds from Extended-Term Financing					
9300 Interfund Transfers - IN					
9400 Sale of or Compensation for Loss of Fixed Assets	22,815				
9710 Transfers from Component Units					
9720 Transfers from Primary Governments					
9910 Other Financing Sources Not Listed in the 9000 Series					
9990 Insurance Recoveries					
5120 Debt Service – Refunded Bonds					
5150 Bond Discounts					
5200 Interfund Transfers – Out	26,799,665				
5300 Transfers Out to Component Units/Primary Governments					
<b>Total Other Financing Sources (Uses)</b>	<b>(\$26,776,850)</b>				

Amounts Expressed in Whole Dollars	<u>Capital Reserve (1431)</u> <u>(32)</u>	<u>Other Capital Projects</u> <u>Fund</u> <u>(39)</u>	<u>Debt Service</u> <u>(40)</u>	<u>Permanent</u> <u>(90)</u>	<u>Total Governmental</u> <u>Funds</u>
<b>Revenues</b>					
6000 Revenue from Local Sources		82,633	5,984		252,781,933
7000 Revenue from State Sources					60,915,428
8000 Revenue from Federal Sources					1,725,342
<b>Total Revenues</b>		<b>\$82,633</b>	<b>\$5,984</b>		<b>\$315,422,703</b>
<b>Expenditures</b>					
1000 Instruction					168,365,492
2000 Support Services		6,187,003			91,072,104
3000 Operation of Non-Instructional Services					6,468,368
4000 Facilities Acquisition, Construction and Improvement Services		13,780,704			13,780,704
5110 Debt Service					19,560,144
5130 Refund of Prior Year Revenues / Receipts					
5140 Short-Term Borrowing – Interest and Costs					
<b>Total Expenditures</b>		<b>\$19,967,707</b>			<b>\$299,246,812</b>
<b>Excess (Deficiency) Of Revenues Over Expenditures</b>		<b>(\$19,885,074)</b>	<b>\$5,984</b>		<b>\$16,175,891</b>
<b>Other Financing Sources (Uses)</b>					
9110 Face Value of Bonds Issued					
9120 Proceeds from Refunding of Bonds					
9130 Bond Premiums					
9200 Proceeds from Extended-Term Financing					
9300 Interfund Transfers - IN		16,299,665	10,500,000		26,799,665
9400 Sale of or Compensation for Loss of Fixed Assets					22,815
9710 Transfers from Component Units					
9720 Transfers from Primary Governments					
9910 Other Financing Sources Not Listed in the 9000 Series					
9990 Insurance Recoveries					
5120 Debt Service – Refunded Bonds					
5150 Bond Discounts					
5200 Interfund Transfers – Out					26,799,665
5300 Transfers Out to Component Units/Primary Governments					
<b>Total Other Financing Sources (Uses)</b>		<b>\$16,299,665</b>	<b>\$10,500,000</b>		<b>\$22,815</b>

Amounts Expressed in Whole Dollars	<u>General Fund</u> <u>(10)</u>	<u>Public Purpose Trust</u> <u>(27)</u>	<u>Other Compt Approved</u> <u>(28)</u>	<u>Athletic / Activity</u> <u>(29)</u>	<u>Capital Reserve</u> <u>(690.</u> <u>1850)</u> <u>(31)</u>
<b>Special And Extraordinary Items</b>					
9920 Special Items – Gains					
9930 Extraordinary Items – Gains					
5520 Special Items – Losses					
5530 Extraordinary Items – Losses					
<b>Net Change In Fund Balances</b>	<b>\$9,278,131</b>				
<b>Fund Balance</b>					
0001 Fund Balance - Beginning of Fiscal Year	25,744,987				
<b>Fund Balance - End Of Year</b>	<b>\$35,023,118</b>				

Amounts Expressed in Whole Dollars	<u>Capital Reserve (1431)</u> <u>(32)</u>	<u>Other Capital Projects</u> <u>Fund</u> <u>(39)</u>	<u>Debt Service</u> <u>(40)</u>	<u>Permanent</u> <u>(90)</u>	<u>Total Governmental</u> <u>Funds</u>
<b>Special And Extraordinary Items</b>					
9920 Special Items – Gains					
9930 Extraordinary Items – Gains					
5520 Special Items – Losses					
5530 Extraordinary Items – Losses					
<b>Net Change In Fund Balances</b>		<b>(\$3,585,409)</b>	<b>\$10,505,984</b>		<b>\$16,198,706</b>
<b>Fund Balance</b>					
0001 Fund Balance - Beginning of Fiscal Year		18,853,574	9,149,666		53,748,227
<b>Fund Balance - End Of Year</b>		<b>\$15,268,165</b>	<b>\$19,655,650</b>		<b>\$69,946,933</b>

Amounts Expressed in Whole Dollars	<u>Food Service</u> (51)	<u>Child Care</u> <u>Operations</u> (52)	<u>Other Enterprise</u> (58)	<u>TOTAL</u>	<u>Internal Service</u> (60)
<b>Assets And Deferred Outflows Of Resources</b>					
<b>Current Assets</b>					
0100 Cash and Cash Equivalents	463,771			463,771	
0110 Investments	10,096			10,096	
0130 Due From Other Funds	28,713			28,713	
0141 Due From Other Governments					
0142 State Revenue Receivable	15,251			15,251	
0143 Federal Revenue Receivable	121,805			121,805	
0146 Due from Primary Government					
0147 Due from Component Unit					
0150 Other Receivables					
0170 Inventories	109,007			109,007	
0180 Prepaid Expenses (Expenditures)					
0190 Other Current Assets					
<b>Total Current Assets</b>	<b>\$748,643</b>			<b>\$748,643</b>	
<b>Noncurrent Assets</b>					
0211 Land					
0212 Site Improvements (Net)					
0220 Buildings and Building Improvements (Net)					
0230 Machinery, Equipment and Furniture (Net)	799,426			799,426	
0250 Construction in Progress					
0260 Long Term Prepayments					
0290 Other Noncurrent Assets					
<b>Total Noncurrent Assets</b>	<b>\$799,426</b>			<b>\$799,426</b>	
0910 Deferred Outflows of Resources					
<b>Total Assets And Deferred Outflows Of Resources</b>	<b>\$1,548,069</b>			<b>\$1,548,069</b>	

Amounts Expressed in Whole Dollars	<u>Food Service</u> (51)	<u>Child Care</u> <u>Operations</u> (52)	<u>Other Enterprise</u> (58)	<u>TOTAL</u>	<u>Internal Service</u> (60)
<b>Liabilities And Deferred Inflows Of Resources And Net Position</b>					
<b>Current Liabilities</b>					
0400 Due to Other Funds					
0411 Due to Other Governments					
0413 Due to Component Unit					
0420 Accounts Payable	288,718			288,718	
0430 Contracts Payable					
0440 Current Portion of Long-Term Debt					
0450 Short-Term Payables					
0461 Accrued Salaries and Benefits					
0462 Payroll Deductions and Withholding					
0480 Unearned Revenues	268,058			268,058	
0490 Other Current Liabilities					
<b>Total Current Liabilities</b>	<b>\$556,776</b>			<b>\$556,776</b>	
<b>Noncurrent Liabilities</b>					
0510 Bonds Payable					
0520 Extended-Term Financing Agreements Payable					
0530 Lease-Purchase Obligations					
0540 Accumulated Compensated Absences					
0550 Authority Lease Obligations					
0560 Other Post-Employment Benefits (OPEB)					
0570 Net Pension Liability					
0599 Other Long-Term Liabilities					
<b>Total Noncurrent Liabilities</b>					
<b>Total Liabilities</b>	<b>\$556,776</b>			<b>\$556,776</b>	
0950 Deferred Inflows of Resources					
<b>Net Position</b>					
0791 Invested in Capital Assets, Net of Related Debt		991,293		991,293	
0008 Restricted Net Position (0792 – 0798)					
0799 Unrestricted Net Position					
<b>Total Net Position</b>		<b>\$991,293</b>		<b>\$991,293</b>	
<b>Total Liabilities And Deferred Inflows Of Resources And Net Position</b>	<b>\$1,548,069</b>			<b>\$1,548,069</b>	

Amounts Expressed in Whole Dollars	<u>Food Service</u> <u>(51)</u>	<u>Child Care Operations</u> <u>(52)</u>	<u>Other Enterprise</u> <u>(58)</u>	<u>TOTAL</u>	<u>Internal Service</u> <u>(60)</u>
<b>Operating Revenues</b>					
6600 Food Service Revenue	3,918,302			3,918,302	
0071 Charges for Services					
0072 Other Operating Revenue					
<b>Total Operating Revenues</b>	<b>\$3,918,302</b>			<b>\$3,918,302</b>	
<b>Operating Expenses</b>					
100 Personnel Services – Salaries					
200 Personnel Services – Employee Benefits					
300 Purchased Professional and Technical Services	66,091			66,091	
400 Purchased Property Services	496,715			496,715	
500 Other Purchased Services	4,253,269			4,253,269	
600 Supplies	12,516			12,516	
740 Depreciation	196,629			196,629	
810 Dues and Fees	9,639			9,639	
890 Miscellaneous Expenditures	10,426			10,426	
<b>Total Operating Expenses</b>	<b>\$5,045,285</b>			<b>\$5,045,285</b>	
<b>Operating Income (Loss)</b>	<b>(\$1,126,983)</b>			<b>(\$1,126,983)</b>	
<b>Non Operating Revenues (Expenses)</b>					
6500 Earnings on Investments	1,530			1,530	
6920 Contributions and Donations from Private Sources					
6930 Gains or Losses on Sale of Fixed Assets					
6991 Refunds of a Prior Year Expenditure					
7000 Revenue from State Sources	86,035			86,035	
8000 Revenue from Federal Sources	1,010,960			1,010,960	
820 Claims and Judgments Against the LEA					
830 Interest					
<b>TOTAL Non Operating Revenues (Expenses)</b>	<b>\$1,098,525</b>			<b>\$1,098,525</b>	
<b>Income (Loss) Before Contributions And Transfers</b>	<b>(\$28,458)</b>			<b>(\$28,458)</b>	

Amounts Expressed in Whole Dollars	<u>Food Service</u> <u>(51)</u>	<u>Child Care Operations</u> <u>(52)</u>	<u>Other Enterprise</u> <u>(58)</u>	<u>TOTAL</u>	<u>Internal Service</u> <u>(60)</u>
<b>Contributions, Transfers, and Special and Extraordinary Items</b>					
5200 Interfund Transfers – Out					
5300 Transfers Out to Component Units/Primary Governments					
5520 Special Items – Losses					
5530 Extraordinary Items – Losses					
9300 Interfund Transfers - IN					
9500 Capital Contributions					
9700 Transfers IN From Component Units/Primary Governments					
9920 Special Items – Gains					
9930 Extraordinary Items – Gains					
<b>Change In Net Position</b>	<b>(\$28,458)</b>			<b>(\$28,458)</b>	
0002 Net Position - Beginning of Fiscal Year	1,019,751			1,019,751	
0003 Accounting Changes / Residual Equity Transfers					
<b>Net Position - End Of Year</b>	<b>\$991,293</b>			<b>\$991,293</b>	



Amounts Expressed in Whole Dollars	<u>Food Service</u> <u>(51)</u>	<u>Child Care Operations</u> <u>(52)</u>	<u>Other Enterprise</u> <u>(58)</u>	<u>TOTAL</u>	<u>Internal Service(60)</u>
<b>Cash Flows From Operating Activities</b>					
0011 Cash Receipts From Users	3,918,302			3,918,302	
0012 Cash Receipts From Assessments Made to Other Funds					
0013 Cash Receipts From Earnings on Investments					
0014 Cash Receipts From Other Operating Revenue					
0015 Cash Payments To Employees For Services					
0016 Cash Payments For Insurance Claims					
0017 Cash Payments To Suppliers For Goods and Services	5,045,285			5,045,285	
0018 Cash Payments For Other Operating Expenses					
<b>Net Cash Provided By (Used For) Operating Activities</b>	<b>(\$1,126,983)</b>			<b>(\$1,126,983)</b>	
<b>Cash Flows From Non-Capital Financing Activities</b>					
0021 Receipts From Local Sources - 6000					
0022 Receipts From State Sources - 7000	86,035			86,035	
0023 Receipts From Federal Sources -8000	1,010,960			1,010,960	
0024 Notes and Loans Received (Repaid)					
0025 Interest Paid on Notes/Loans - 5100-830					
0026 Operating Transfers In (Out)/Residual Equity Trans					
0027 Operating Transfers In (Out) Primary Government / Comp Unit					
0028 Receipts From Refund of Prior Year Expenditures - 6991					
0029 Special and Extraordinary Gains (losses)					
<b>Net Cash Prov By (Used for) Non-Capital Financing Activities</b>	<b>\$1,096,995</b>			<b>\$1,096,995</b>	
<b>Cash Flows From Capital and Related Financing Activities</b>					
0031 Payments For Fac Acq, Const, and Imp - 4000					
0032 Gain / (Loss) on Sale of Fixed Assets - 6930					
0033 Proceeds From Extended Term Financing - 9200					
0034 Principal Paid on Financing Agreements					
0035 Interest Paid on Financing Agreements - 5100-830					
0036 (Inc) Dec in Contributed Capital					
<b>Net Cash Prov By (Used for) Capital and Related Financing Activities</b>					
<b>Cash Flows From Investing Activities</b>					
0041 Earnings on Investments - 6500	1,530			1,530	
0042 Purchase of Inv Securities / Deposits to Inv Pools					
0043 Receipts From Investment Pool Withdrawals					
0044 Proceeds from Sale and Maturity of Inv Securities					
0045 Loans Received (Paid)					
<b>Net Cash Prov By (Used for) Investing Activities</b>	<b>\$1,530</b>			<b>\$1,530</b>	

	<u>Food Service</u> <u>(51)</u>	<u>Child Care Operations</u> <u>(52)</u>	<u>Other Enterprise</u> <u>(58)</u>	<u>TOTAL</u>	<u>Internal Service</u> <u>(60)</u>
<b>Net Increase (Decrease) in Cash Flows</b>	<b>(28,458)</b>			<b>(28,458)</b>	
0004 Cash and Cash Equivalents Beginning of Year	492,229			492,229	
<b>Cash and Cash Equivalents at Year End</b>	<b>\$463,771</b>			<b>\$463,771</b>	

**Reconciliation of Operating Income (Loss) To Net Cash Provided by (Used For) Operating Activities**

0005 Operating Income (Loss) per REP	(1,126,983)			(1,126,983)	
--------------------------------------	-------------	--	--	-------------	--

**Adjustments**

- 0051 Depreciation and Net Amortization
- 0052 Provision for Uncollectible Accounts
- 0053 Other Adjustments

**Effect of Changes in Assets, Liabilities, Deferred Outflows and Deferred Inflows**

- 0054 (Inc) Dec In Accounts Receivable (0120-0150)
- 0055 Advances to Other Funds (0160)
- 0056 (Inc) Dec in Inventories (0170)
- 0057 (Inc) Dec in Prepaid Expenses (0180)
- 0058 (Inc) Dec in Other Current or Noncurrent Assets
- 0064 Deferred Outflows (0910)
- 0059 Inc (Dec) in Accounts Payable (0400-0450)
- 0060 Inc (Dec) in Accrued Salaries/Benefits (0461)
- 0065 Inc (Dec) in Net Pension Liabilities (0570)
- 0066 Inc (Dec) in Other Postemp Benefit Oblig (0560)
- 0061 Inc (Dec) in Payroll Deductions/Withholding (0462)
- 0062 Inc (Dec) in Unearned Revenue (0480)
- 0063 Inc (Dec) in Other Current or Noncurrent Liabilities
- 0067 Deferred Inflows (0950)

<b>Total Adjustments</b>					
<b>Cash Provided By (Used for) Total</b>	<b>(\$1,126,983)</b>			<b>(\$1,126,983)</b>	

COMBINED STATEMENT OF CASH FLOWS  
SCHEDULE OF NONCASH INVESTING, CAPITAL, AND FINANCING ACTIVITIES

Explanation of Transaction and Balance Sheet Effect	Amount
<b>Total</b>	

LEA : 122092102 Central Bucks SD

Printed 10/27/2016 10:23:54 AM

Amounts Expressed in Whole Dollars	<u>Private Purpose Trust</u> <u>(71)</u>	<u>Investment Trust</u> <u>(72)</u>	<u>Pension Trust</u> <u>(73)</u>	<u>Activity</u> <u>(81)</u>
<b>Assets And Deferred Outflows Of Resources</b>				
<b>Assets</b>				
0100 Cash and Cash Equivalents				
0110 Investments				
0130 Due From Other Funds				
0147 Due from Component Unit				
0150 Other Receivables				
0170 Inventories				
0180 Prepaid Expenses (Expenditures)				
0190 Other Current Assets				
0220 Buildings and Building Improvements (Net)				
0230 Machinery, Equipment and Furniture (Net)				
<b>Total Assets</b>				
0910 Deferred Outflows of Resources				
<b>Total Assets And Deferred Outflows Of Resources</b>				

LEA : 122092102 Central Bucks SD

Printed 10/27/2016 10:23:54 AM

Amounts Expressed in Whole Dollars

	<u>Other Agency</u> <u>(89)</u>	<u>Discrete Component Units</u> <u>(98)</u>	<u>Discrete Component Units</u> <u>(99)</u>	<u>Total Fiduciary Funds</u>
<b>Assets And Deferred Outflows Of Resources</b>				
<b>Assets</b>				
0100 Cash and Cash Equivalents		88,248		88,248
0110 Investments		1,422,197		1,422,197
0130 Due From Other Funds				
0147 Due from Component Unit				
0150 Other Receivables				
0170 Inventories				
0180 Prepaid Expenses (Expenditures)				
0190 Other Current Assets				
0220 Buildings and Building Improvements (Net)				
0230 Machinery, Equipment and Furniture (Net)				
<b>Total Assets</b>		<b>\$1,510,445</b>		<b>\$1,510,445</b>
0910 Deferred Outflows of Resources				
<b>Total Assets And Deferred Outflows Of Resources</b>		<b>\$1,510,445</b>		<b>\$1,510,445</b>

LEA : 122092102 Central Bucks SD

Printed 10/27/2016 10:23:54 AM

Amounts Expressed in Whole Dollars

Private Purpose Trust  
(71)

Investment Trust  
(72)

Pension Trust  
(73)

Activity  
(81)

**Liabilities, Deferred Inflows Of Resources And Net Position**

**Liabilities**

- 0400 Due to Other Funds
- 0411 Due to Other Governments
- 0412 Due to Primary Government
- 0413 Due to Component Unit
- 0420 Accounts Payable
- 0430 Contracts Payable
- 0450 Short-Term Payables
- 0461 Accrued Salaries and Benefits
- 0462 Payroll Deductions and Withholding
- 0480 Unearned Revenues
- 0490 Other Current Liabilities

**Total Liabilities**

- 0950 Deferred Inflows of Resources

**Net Position**

- 0791 Invested in Capital Assets, Net of Related Debt
- 0009 Restricted Net Position (0792 – 0798)
- 0799 Unrestricted Net Position

**Total Net Position**

**Total Liabilities, Deferred Inflows Of Resources And Net Position**

LEA : 122092102 Central Bucks SD

Printed 10/27/2016 10:23:54 AM

Amounts Expressed in Whole Dollars	<u>Other Agency</u> (89)	<u>Discrete Component Units</u> (98)	<u>Discrete Component Units</u> (99)	<u>Total Fiduciary Funds</u>
<b>Liabilities, Deferred Inflows Of Resources And Net Position</b>				
<b>Liabilities</b>				
0400 Due to Other Funds				
0411 Due to Other Governments				
0412 Due to Primary Government				
0413 Due to Component Unit				
0420 Accounts Payable				
0430 Contracts Payable				
0450 Short-Term Payables				
0461 Accrued Salaries and Benefits				
0462 Payroll Deductions and Withholding				
0480 Unearned Revenues				
0490 Other Current Liabilities		1,510,445		1,510,445
<b>Total Liabilities</b>		<b>\$1,510,445</b>		<b>\$1,510,445</b>
0950 Deferred Inflows of Resources				
<b>Net Position</b>				
0791 Invested in Capital Assets, Net of Related Debt				
0009 Restricted Net Position (0792 – 0798)				
0799 Unrestricted Net Position				
<b>Total Net Position</b>				
<b>Total Liabilities, Deferred Inflows Of Resources And Net Position</b>		<b>\$1,510,445</b>		<b>\$1,510,445</b>

	<u>Revenue Reported In Current Year</u>	<u>Current Year Tax Accrual</u>	<u>Prior Year Tax Accrual</u>	<u>Taxes Collected In Current Year</u>
<b><u>Revenue from Local Sources</u></b>				
6111 Current Real Estate Taxes	210,702,759.86	237,869.00	244,371.06	210,709,261.92
6112 Interim Real Estate Taxes	1,602,640.65			1,602,640.65
6113 Public Utility Realty Taxes	274,496.06			274,496.06
6151 Current Act 511 Earned Income Taxes	23,274,334.47	303,668.00	222,255.00	23,192,921.47
6153 Current Act 511 Real Estate Transfer Taxes	5,344,464.84	1,054,270.00	484,205.00	4,774,399.84
6411 Delinquent Real Estate Taxes	2,706,135.78	306,392.00	210,950.41	2,610,694.19
6451 Delinquent Act 511 Earned Income Taxes	668,532.86			668,532.86
6500 Earnings on Investments	429,479.54			
6700 Revenues from LEA Activities	367,014.63			
6832 Federal IDEA Revenue Received as Pass Through	2,439,962.41			
6910 Rentals	45,581.47			
6920 Contributions and Donations from Private Sources	518,913.23			
6941 Regular Day School Tuition	53,884.56			
6944 Receipts from Other LEAs in Pennsylvania - Education	490,010.42			
6980 Revenue from Community Services Activities	3,725,786.79			
6999 Other Revenues Not Specified Above	49,318.21			
<b>TOTAL Revenue from Local Sources</b>	<b>\$252,693,315.78</b>	<b>\$1,902,199.00</b>	<b>\$1,161,781.47</b>	<b>\$243,832,946.99</b>



**Revenue Reported  
In Current Year**

**Revenue from State Sources**

7110 Basic Education Funding	16,863,908.49		
7160 Tuition for Orphans Subsidy	90,709.79		
7271 Special Education funds for School-Aged Pupils	7,262,128.45		
7311 Pupil Transportation Subsidy	2,709,011.90		
7312 Nonpublic and Charter School Pupil Transportation Subsidy	671,431.46		
7320 Rental and Sinking Fund Payments / Building Reimbursement Subsidy	2,303,178.02		
7330 Health Services (Medical, Dental, Nurse, Act 25)	372,071.97		
7340 State Property Tax Reduction Allocation	5,857,240.15		
7505 Ready to Learn Block Grant	819,808.00		
7810 State Share of Social Security and Medicare Taxes	5,096,017.13		
7820 State Share of Retirement Contributions	18,869,922.20		
<b>TOTAL Revenue from State Sources</b>	<b>\$60,915,427.56</b>		

**Revenue Reported  
In Current Year**

**Revenue from Federal Sources**

8514 NCLB, Title I - Improving the Academic Achievement of the Disadvantaged	600,745.00		
8515 NCLB, Title II - Preparing, Training and Recruiting High Quality Teachers and Principals	281,443.00		
8516 NCLB, Title III - Language Instruction for Limited English Proficient and Immigrant Students	42,221.00		
8810 School-Based Access Medicaid Reimbursement Program (SBAP) Reimbursements (Access)	752,562.00		
8820 Medical Assistance Reimbursement for Administrative Claiming (Quarterly) Program	48,371.33		
<b>TOTAL Revenue from Federal Sources</b>	<b>\$1,725,342.33</b>		

**Revenue Reported  
In Current Year**

**Other Financing Sources**

9400 Sale of or Compensation for Loss of Fixed Assets	22,815.21			
<b>TOTAL Other Financing Sources</b>	<b>\$22,815.21</b>			
<b>TOTAL FROM ALL SOURCES</b>	<b>\$315,356,900.88</b>	<b>\$1,902,199.00</b>	<b>\$1,161,781.47</b>	<b>\$243,832,946.99</b>

Revenue from Local Sources	252,693,315.78
Revenue from State Sources	60,915,427.56
Revenue from Federal Sources	1,725,342.33
Other Financing Sources	22,815.21
<b>TOTAL FROM ALL SOURCES</b>	<b>\$315,356,900.88</b>

General Fund (10)

	<u>Total</u>
<b>1000 Instruction</b>	
<b>100 Personnel Services – Salaries</b>	
100 Personnel Services – Salaries	101,433,693.62
<b>Total Personnel Services – Salaries</b>	<b>\$101,433,693.62</b>
<b>200 Personnel Services – Employee Benefits</b>	
220 Social Security Contributions	7,520,429.85
230 PSERS Retirement Contributions	26,263,255.42
250 Unemployment Compensation	32,795.95
260 Workers’ Compensation	798,871.42
270 Group Insurance – Self-Insurance	16,725,122.18
290 Other Current Employee Benefits	178,588.57
<b>Total Personnel Services – Employee Benefits</b>	<b>\$51,519,063.39</b>
<b>300 Purchased Professional and Technical Services</b>	
322 Professional Educational Services – Ius	1,243,955.78
323 Professional Educational Services – Other Educational Agencies	94,355.00
324 Professional Educational Services – Employee Training and Development Services	579,394.62
329 Professional Educational Services – Other	106,619.39
330 Other Professional Services	1,331,886.63
<b>Total Purchased Professional and Technical Services</b>	<b>\$3,356,211.42</b>
<b>400 Purchased Property Services</b>	
430 Repairs and Maintenance Services	159,825.21
440 Rentals	441,481.19
<b>Total Purchased Property Services</b>	<b>\$601,306.40</b>
<b>500 Other Purchased Services</b>	
530 Communications	125.00
550 Printing and Binding	620.00
561 Tuition To Other School Districts Within the State	1,097.10
562 Tuition To Pennsylvania Charter Schools	1,208,146.77
564 Tuition To Career and Technology Centers	4,324,342.73
567 Tuition To Approved Private Schools (APS) and PA Chartered Schools for the Deaf and Blind	225,489.97
568 Tuition To Private Residential Rehabilitative Institutions (PRRI) [In-State] and Detention Centers	975,773.40
569 Tuition – Other	1,796,891.91
580 Travel	71,802.29
592 Services Purchased From Another LEA Within the State	10,069.00
594 IU Payment By Withholding for Institutionalized Children’s Programs – Special Classes	6,558.33
<b>Total Other Purchased Services</b>	<b>\$8,620,916.50</b>
<b>600 Supplies</b>	
610 General Supplies	1,497,569.28
620 Energy	345,005.11
640 Books and Periodicals	561,087.66
650 Supplies & Fees – Technology Related	87,852.19
<b>Total Supplies</b>	<b>\$2,491,514.24</b>
<b>700 Property</b>	
750 Equipment – Original and Additional	293,771.16

**General Fund (10)**

<b>1000 Instruction</b>	<b><u>Total</u></b>
<b>700 <u>Property</u></b>	
760 Equipment – Replacement	44,199.55
<b>Total Property</b>	<b>\$337,970.71</b>
<b>800 <u>Other Objects</u></b>	
810 Dues and Fees	4,816.19
<b>Total Other Objects</b>	<b>\$4,816.19</b>
<b>Total 1000 Instruction</b>	<b>\$168,365,492.47</b>

LEA : 122092102 Central Bucks SD

Printed 10/27/2016 10:23:56 AM

Page - 3 of 24

**General Fund (10)****1100 Regular Programs – Elementary / Secondary**

	<u>Elementary</u>	<u>Secondary</u>	<u>Federal</u>	<u>Total</u>
<b>100 Personnel Services – Salaries</b>				
100 Personnel Services – Salaries	40,235,442.31	39,114,954.67	598,452.17	79,948,849.15
<b>Total Personnel Services – Salaries</b>	<b>\$40,235,442.31</b>	<b>\$39,114,954.67</b>	<b>\$598,452.17</b>	<b>\$79,948,849.15</b>
<b>200 Personnel Services – Employee Benefits</b>				
220 Social Security Contributions	2,989,527.06	2,915,207.32	43,805.27	5,948,539.65
230 PSERS Retirement Contributions	10,431,990.74	10,167,722.20	139,397.73	20,739,110.67
250 Unemployment Compensation	10,974.54	9,404.19	578.92	20,957.65
260 Workers' Compensation	294,258.05	254,087.54	15,580.06	563,925.65
270 Group Insurance – Self-Insurance	6,374,020.34	5,974,478.08	28,082.99	12,376,581.41
290 Other Current Employee Benefits	68,263.65	71,049.92		139,313.57
<b>Total Personnel Services – Employee Benefits</b>	<b>\$20,169,034.38</b>	<b>\$19,391,949.25</b>	<b>\$227,444.97</b>	<b>\$39,788,428.60</b>
<b>300 Purchased Professional and Technical Services</b>				
329 Professional Educational Services – Other	9,061.30	12,108.51		21,169.81
<b>Total Purchased Professional and Technical Services</b>	<b>\$9,061.30</b>	<b>\$12,108.51</b>		<b>\$21,169.81</b>
<b>400 Purchased Property Services</b>				
430 Repairs and Maintenance Services	72,119.25	83,773.11		155,892.36
440 Rentals	222,283.32	216,197.87		438,481.19
<b>Total Purchased Property Services</b>	<b>\$294,402.57</b>	<b>\$299,970.98</b>		<b>\$594,373.55</b>
<b>500 Other Purchased Services</b>				
550 Printing and Binding		620.00		620.00
562 Tuition To Pennsylvania Charter Schools	123,795.07	703,323.01		827,118.08
568 Tuition To Private Residential Rehabilitative Institutions (PRRI) [In-State] and Detention Centers	8,068.44	8,397.77		16,466.21
580 Travel	9,219.84	19,416.35		28,636.19
<b>Total Other Purchased Services</b>	<b>\$141,083.35</b>	<b>\$731,757.13</b>		<b>\$872,840.48</b>
<b>600 Supplies</b>				
610 General Supplies	668,069.25	697,081.71	5,498.89	1,370,649.85
620 Energy	130,593.47	211,499.45		342,092.92
640 Books and Periodicals	194,032.70	334,602.40		528,635.10
650 Supplies & Fees – Technology Related	34,369.00	52,105.25		86,474.25
<b>Total Supplies</b>	<b>\$1,027,064.42</b>	<b>\$1,295,288.81</b>	<b>\$5,498.89</b>	<b>\$2,327,852.12</b>
<b>700 Property</b>				
750 Equipment – Original and Additional	61,304.95	168,636.52		229,941.47
760 Equipment – Replacement	7,898.25	36,019.54		43,917.79
<b>Total Property</b>	<b>\$69,203.20</b>	<b>\$204,656.06</b>		<b>\$273,859.26</b>
<b>800 Other Objects</b>				
810 Dues and Fees	208.00	3,795.25		4,003.25
<b>Total Other Objects</b>	<b>\$208.00</b>	<b>\$3,795.25</b>		<b>\$4,003.25</b>
<b>Total 1100 Regular Programs – Elementary / Secondary</b>	<b>\$61,945,499.53</b>	<b>\$61,054,480.66</b>	<b>\$831,396.03</b>	<b>\$123,831,376.22</b>

**General Fund (10)**

**1110 Regular Programs**

	<u>Elementary</u>	<u>Secondary</u>	<u>Federal</u>	<u>Total</u>
<b>100 Personnel Services – Salaries</b>				
100 Personnel Services – Salaries	40,235,442.31	39,114,954.67		79,350,396.98
<b>Total Personnel Services – Salaries</b>	<b>\$40,235,442.31</b>	<b>\$39,114,954.67</b>		<b>\$79,350,396.98</b>
<b>200 Personnel Services – Employee Benefits</b>				
220 Social Security Contributions	2,989,527.06	2,915,207.32		5,904,734.38
230 PSERS Retirement Contributions	10,431,990.74	10,167,722.20		20,599,712.94
250 Unemployment Compensation	10,974.54	9,404.19		20,378.73
260 Workers' Compensation	294,258.05	254,087.54		548,345.59
270 Group Insurance – Self-Insurance	6,374,020.34	5,974,478.08		12,348,498.42
290 Other Current Employee Benefits	68,263.65	71,049.92		139,313.57
<b>Total Personnel Services – Employee Benefits</b>	<b>\$20,169,034.38</b>	<b>\$19,391,949.25</b>		<b>\$39,560,983.63</b>
<b>300 Purchased Professional and Technical Services</b>				
329 Professional Educational Services – Other	9,061.30	12,108.51		21,169.81
<b>Total Purchased Professional and Technical Services</b>	<b>\$9,061.30</b>	<b>\$12,108.51</b>		<b>\$21,169.81</b>
<b>400 Purchased Property Services</b>				
430 Repairs and Maintenance Services	72,119.25	83,773.11		155,892.36
440 Rentals	222,283.32	216,197.87		438,481.19
<b>Total Purchased Property Services</b>	<b>\$294,402.57</b>	<b>\$299,970.98</b>		<b>\$594,373.55</b>
<b>500 Other Purchased Services</b>				
550 Printing and Binding		620.00		620.00
562 Tuition To Pennsylvania Charter Schools	123,795.07	703,323.01		827,118.08
568 Tuition To Private Residential Rehabilitative Institutions (PRRI) [In-State] and Detention Centers	8,068.44	8,397.77		16,466.21
580 Travel	9,219.84	19,416.35		28,636.19
<b>Total Other Purchased Services</b>	<b>\$141,083.35</b>	<b>\$731,757.13</b>		<b>\$872,840.48</b>
<b>600 Supplies</b>				
610 General Supplies	668,069.25	697,081.71		1,365,150.96
620 Energy	130,593.47	211,499.45		342,092.92
640 Books and Periodicals	194,032.70	334,602.40		528,635.10
650 Supplies & Fees – Technology Related	34,369.00	52,105.25		86,474.25
<b>Total Supplies</b>	<b>\$1,027,064.42</b>	<b>\$1,295,288.81</b>		<b>\$2,322,353.23</b>
<b>700 Property</b>				
750 Equipment – Original and Additional	61,304.95	168,636.52		229,941.47
760 Equipment – Replacement	7,898.25	36,019.54		43,917.79
<b>Total Property</b>	<b>\$69,203.20</b>	<b>\$204,656.06</b>		<b>\$273,859.26</b>
<b>800 Other Objects</b>				
810 Dues and Fees	208.00	3,795.25		4,003.25
<b>Total Other Objects</b>	<b>\$208.00</b>	<b>\$3,795.25</b>		<b>\$4,003.25</b>
<b>Total 1110 Regular Programs</b>	<b>\$61,945,499.53</b>	<b>\$61,054,480.66</b>		<b>\$122,999,980.19</b>



**General Fund (10)**

**1190 Federally-Funded Regular Programs**

**100 Personnel Services – Salaries**

	<u>Elementary</u>	<u>Secondary</u>	<u>Federal</u>	<u>Total</u>
100 Personnel Services – Salaries			598,452.17	598,452.17
<b>Total Personnel Services – Salaries</b>			<b>\$598,452.17</b>	<b>\$598,452.17</b>

**200 Personnel Services – Employee Benefits**

220 Social Security Contributions			43,805.27	43,805.27
230 PSERS Retirement Contributions			139,397.73	139,397.73
250 Unemployment Compensation			578.92	578.92
260 Workers' Compensation			15,580.06	15,580.06
270 Group Insurance – Self-Insurance			28,082.99	28,082.99
<b>Total Personnel Services – Employee Benefits</b>			<b>\$227,444.97</b>	<b>\$227,444.97</b>

**600 Supplies**

610 General Supplies			5,498.89	5,498.89
<b>Total Supplies</b>			<b>\$5,498.89</b>	<b>\$5,498.89</b>

**Total 1190 Federally-Funded Regular Programs**

			<b>\$831,396.03</b>	<b>\$831,396.03</b>
--	--	--	---------------------	---------------------

**General Fund (10)**

**1200 Special Programs – Elementary / Secondary**

	<u>Elementary</u>	<u>Secondary</u>	<u>Federal</u>	<u>Total</u>
<b>100 Personnel Services – Salaries</b>				
100 Personnel Services – Salaries	9,980,452.76	9,275,010.02	1,695,844.33	20,951,307.11
<b>Total Personnel Services – Salaries</b>	<b>\$9,980,452.76</b>	<b>\$9,275,010.02</b>	<b>\$1,695,844.33</b>	<b>\$20,951,307.11</b>
<b>200 Personnel Services – Employee Benefits</b>				
220 Social Security Contributions	731,902.62	674,250.36	126,313.31	1,532,466.29
230 PSERS Retirement Contributions	2,577,026.00	2,396,427.81	419,559.39	5,393,013.20
250 Unemployment Compensation	4,948.24	6,296.56	451.10	11,695.90
260 Workers' Compensation	111,516.18	106,380.85	13,228.38	231,125.41
270 Group Insurance – Self-Insurance	1,923,509.69	1,994,339.08	363,108.50	4,280,957.27
290 Other Current Employee Benefits	9,818.75	29,456.25		39,275.00
<b>Total Personnel Services – Employee Benefits</b>	<b>\$5,358,721.48</b>	<b>\$5,207,150.91</b>	<b>\$922,660.68</b>	<b>\$11,488,533.07</b>
<b>300 Purchased Professional and Technical Services</b>				
322 Professional Educational Services – Ius	602,580.75	602,580.75	38,794.28	1,243,955.78
323 Professional Educational Services – Other Educational Agencies	9,435.50	84,919.50		94,355.00
324 Professional Educational Services – Employee Training and Development Services			579,394.62	579,394.62
330 Other Professional Services	1,331,886.63			1,331,886.63
<b>Total Purchased Professional and Technical Services</b>	<b>\$1,943,902.88</b>	<b>\$687,500.25</b>	<b>\$618,188.90</b>	<b>\$3,249,592.03</b>
<b>400 Purchased Property Services</b>				
430 Repairs and Maintenance Services	2,632.76	1,300.09		3,932.85
440 Rentals	3,000.00			3,000.00
<b>Total Purchased Property Services</b>	<b>\$5,632.76</b>	<b>\$1,300.09</b>		<b>\$6,932.85</b>
<b>500 Other Purchased Services</b>				
530 Communications	125.00			125.00
562 Tuition To Pennsylvania Charter Schools	67,936.41	313,092.28		381,028.69
567 Tuition To Approved Private Schools (APS) and PA Chartered Schools for the Deaf and Blind	110,490.09	114,999.88		225,489.97
568 Tuition To Private Residential Rehabilitative Institutions (PRRI) [In-State] and Detention Centers	17,066.00	942,241.19		959,307.19
580 Travel	24,439.54	7,256.81	534.07	32,230.42
594 IU Payment By Withholding for Institutionalized Children's Programs – Special Classes	3,213.58	3,344.75		6,558.33
<b>Total Other Purchased Services</b>	<b>\$223,270.62</b>	<b>\$1,380,934.91</b>	<b>\$534.07</b>	<b>\$1,604,739.60</b>
<b>600 Supplies</b>				
610 General Supplies	52,110.91	38,497.38	24,695.00	115,303.29
620 Energy	1,727.43	1,184.76		2,912.19
640 Books and Periodicals	22,432.16	10,020.40		32,452.56
650 Supplies & Fees – Technology Related	829.94	548.00		1,377.94
<b>Total Supplies</b>	<b>\$77,100.44</b>	<b>\$50,250.54</b>	<b>\$24,695.00</b>	<b>\$152,045.98</b>
<b>700 Property</b>				
750 Equipment – Original and Additional	4,075.51	1,929.66	57,824.52	63,829.69
760 Equipment – Replacement	281.76			281.76
<b>Total Property</b>	<b>\$4,357.27</b>	<b>\$1,929.66</b>	<b>\$57,824.52</b>	<b>\$64,111.45</b>
<b>800 Other Objects</b>				
810 Dues and Fees	812.94			812.94

LEA : 122092102 Central Bucks SD

Printed 10/27/2016 10:23:56 AM

General Fund (10)

1200 Special Programs – Elementary / Secondary

	<u>Elementary</u>	<u>Secondary</u>	<u>Federal</u>	<u>Total</u>
Total Other Objects	\$812.94			\$812.94
Total 1200 Special Programs – Elementary / Secondary	\$17,594,251.15	\$16,604,076.38	\$3,319,747.50	\$37,518,075.03

**General Fund (10)**

**1210 Life Skills Support**

	<u>Elementary</u>	<u>Secondary</u>	<u>Federal</u>	<u>Total</u>
<b>100 Personnel Services – Salaries</b>				
100 Personnel Services – Salaries	159,559.96	122,980.11		282,540.07
<b>Total Personnel Services – Salaries</b>	<b>\$159,559.96</b>	<b>\$122,980.11</b>		<b>\$282,540.07</b>
<b>200 Personnel Services – Employee Benefits</b>				
220 Social Security Contributions	11,576.94	8,789.90		20,366.84
230 PSERS Retirement Contributions	40,768.08	31,765.79		72,533.87
250 Unemployment Compensation	176.45	59.00		235.45
260 Workers' Compensation	3,404.69	1,702.68		5,107.37
270 Group Insurance – Self-Insurance	77,866.61	58,389.00		136,255.61
<b>Total Personnel Services – Employee Benefits</b>	<b>\$133,792.77</b>	<b>\$100,706.37</b>		<b>\$234,499.14</b>
<b>600 Supplies</b>				
610 General Supplies	1,648.13	3,744.78		5,392.91
<b>Total Supplies</b>	<b>\$1,648.13</b>	<b>\$3,744.78</b>		<b>\$5,392.91</b>
<b>700 Property</b>				
750 Equipment – Original and Additional		652.80		652.80
<b>Total Property</b>		<b>\$652.80</b>		<b>\$652.80</b>
<b>Total 1210 Life Skills Support</b>	<b>\$295,000.86</b>	<b>\$228,084.06</b>		<b>\$523,084.92</b>

**General Fund (10)**

**1220 Sensory Support**

	<u>Elementary</u>	<u>Secondary</u>	<u>Federal</u>	<u>Total</u>
<b>100 Personnel Services – Salaries</b>				
100 Personnel Services – Salaries	58,953.02	105,449.52		164,402.54
<b>Total Personnel Services – Salaries</b>	<b>\$58,953.02</b>	<b>\$105,449.52</b>		<b>\$164,402.54</b>
<b>200 Personnel Services – Employee Benefits</b>				
220 Social Security Contributions	4,152.21	7,738.71		11,890.92
230 PSERS Retirement Contributions	15,233.48	27,248.14		42,481.62
250 Unemployment Compensation	2.50	2.60		5.10
260 Workers' Compensation	325.67	425.67		751.34
270 Group Insurance – Self-Insurance	11,307.57	14,597.25		25,904.82
<b>Total Personnel Services – Employee Benefits</b>	<b>\$31,021.43</b>	<b>\$50,012.37</b>		<b>\$81,033.80</b>
<b>500 Other Purchased Services</b>				
580 Travel		1,203.26		1,203.26
<b>Total Other Purchased Services</b>		<b>\$1,203.26</b>		<b>\$1,203.26</b>
<b>600 Supplies</b>				
610 General Supplies	5,343.94			5,343.94
<b>Total Supplies</b>	<b>\$5,343.94</b>			<b>\$5,343.94</b>
<b>Total 1220 Sensory Support</b>	<b>\$95,318.39</b>	<b>\$156,665.15</b>		<b>\$251,983.54</b>

**General Fund (10)**

**1230 Emotional Support**

	<u>Elementary</u>	<u>Secondary</u>	<u>Federal</u>	<u>Total</u>
<b>100 Personnel Services – Salaries</b>				
100 Personnel Services – Salaries	1,384,575.64	930,749.96		2,315,325.60
<b>Total Personnel Services – Salaries</b>	<b>\$1,384,575.64</b>	<b>\$930,749.96</b>		<b>\$2,315,325.60</b>
<b>200 Personnel Services – Employee Benefits</b>				
220 Social Security Contributions	101,475.55	68,229.68		169,705.23
230 PSERS Retirement Contributions	355,818.91	250,748.90		606,567.81
250 Unemployment Compensation	600.60	339.67		940.27
260 Workers' Compensation	20,109.55	10,517.87		30,627.42
270 Group Insurance – Self-Insurance	405,976.89	243,753.34		649,730.23
<b>Total Personnel Services – Employee Benefits</b>	<b>\$883,981.50</b>	<b>\$573,589.46</b>		<b>\$1,457,570.96</b>
<b>600 Supplies</b>				
610 General Supplies	20,763.77	9,299.08		30,062.85
640 Books and Periodicals	523.71	577.48		1,101.19
<b>Total Supplies</b>	<b>\$21,287.48</b>	<b>\$9,876.56</b>		<b>\$31,164.04</b>
<b>Total 1230 Emotional Support</b>	<b>\$2,289,844.62</b>	<b>\$1,514,215.98</b>		<b>\$3,804,060.60</b>

LEA : 122092102 Central Bucks SD

Printed 10/27/2016 10:23:56 AM

Page - 11 of 24

**General Fund (10)****1240 Academic Support**

	<u>Elementary</u>	<u>Secondary</u>	<u>Federal</u>	<u>Total</u>
<b>100 Personnel Services – Salaries</b>				
100 Personnel Services – Salaries	7,099,660.47	6,274,128.54	1,695,844.33	15,069,633.34
<b>Total Personnel Services – Salaries</b>	<b>\$7,099,660.47</b>	<b>\$6,274,128.54</b>	<b>\$1,695,844.33</b>	<b>\$15,069,633.34</b>
<b>200 Personnel Services – Employee Benefits</b>				
220 Social Security Contributions	521,326.15	456,006.16	126,313.31	1,103,645.62
230 PSERS Retirement Contributions	1,840,157.68	1,612,260.75	419,559.39	3,871,977.82
250 Unemployment Compensation	2,861.16	4,515.44	451.10	7,827.70
260 Workers' Compensation	54,251.18	48,145.55	13,228.38	115,625.11
270 Group Insurance – Self-Insurance	1,039,120.97	1,151,013.39	363,108.50	2,553,242.86
290 Other Current Employee Benefits	9,818.75	29,456.25		39,275.00
<b>Total Personnel Services – Employee Benefits</b>	<b>\$3,467,535.89</b>	<b>\$3,301,397.54</b>	<b>\$922,660.68</b>	<b>\$7,691,594.11</b>
<b>300 Purchased Professional and Technical Services</b>				
322 Professional Educational Services – Ius	602,580.75	602,580.75	38,794.28	1,243,955.78
323 Professional Educational Services – Other Educational Agencies	9,435.50	84,919.50		94,355.00
324 Professional Educational Services – Employee Training and Development Services			579,394.62	579,394.62
<b>Total Purchased Professional and Technical Services</b>	<b>\$612,016.25</b>	<b>\$687,500.25</b>	<b>\$618,188.90</b>	<b>\$1,917,705.40</b>
<b>500 Other Purchased Services</b>				
568 Tuition To Private Residential Rehabilitative Institutions (PRRI) [In-State] and Detention Centers	17,066.00	942,241.19		959,307.19
580 Travel		6,053.55	534.07	6,587.62
<b>Total Other Purchased Services</b>	<b>\$17,066.00</b>	<b>\$948,294.74</b>	<b>\$534.07</b>	<b>\$965,894.81</b>
<b>600 Supplies</b>				
610 General Supplies	17,371.76	24,294.06	24,695.00	66,360.82
620 Energy	297.50			297.50
640 Books and Periodicals	19,903.75	9,442.92		29,346.67
650 Supplies & Fees – Technology Related	829.94	548.00		1,377.94
<b>Total Supplies</b>	<b>\$38,402.95</b>	<b>\$34,284.98</b>	<b>\$24,695.00</b>	<b>\$97,382.93</b>
<b>700 Property</b>				
750 Equipment – Original and Additional	1,098.01	1,276.86	57,824.52	60,199.39
<b>Total Property</b>	<b>\$1,098.01</b>	<b>\$1,276.86</b>	<b>\$57,824.52</b>	<b>\$60,199.39</b>
<b>Total 1240 Academic Support</b>	<b>\$11,235,779.57</b>	<b>\$11,246,882.91</b>	<b>\$3,319,747.50</b>	<b>\$25,802,409.98</b>

**General Fund (10)**

**1241 Learning Support – Public**

	<u>Elementary</u>	<u>Secondary</u>	<u>Federal</u>	<u>Total</u>
<b>100 Personnel Services – Salaries</b>				
100 Personnel Services – Salaries	6,262,021.94	6,209,159.27	1,695,844.33	14,167,025.54
<b>Total Personnel Services – Salaries</b>	<b>\$6,262,021.94</b>	<b>\$6,209,159.27</b>	<b>\$1,695,844.33</b>	<b>\$14,167,025.54</b>
<b>200 Personnel Services – Employee Benefits</b>				
220 Social Security Contributions	459,426.11	451,183.56	126,313.31	1,036,922.98
230 PSERS Retirement Contributions	1,622,121.62	1,595,494.22	419,559.39	3,637,175.23
250 Unemployment Compensation	2,697.79	4,501.36	451.10	7,650.25
260 Workers' Compensation	49,381.87	47,754.29	13,228.38	110,364.54
270 Group Insurance – Self-Insurance	913,944.35	1,139,957.48	363,108.50	2,417,010.33
290 Other Current Employee Benefits	8,100.47	29,073.32		37,173.79
<b>Total Personnel Services – Employee Benefits</b>	<b>\$3,055,672.21</b>	<b>\$3,267,964.23</b>	<b>\$922,660.68</b>	<b>\$7,246,297.12</b>
<b>300 Purchased Professional and Technical Services</b>				
322 Professional Educational Services – Ius	602,580.75	602,580.75	38,794.28	1,243,955.78
323 Professional Educational Services – Other Educational Agencies	9,435.50	84,919.50		94,355.00
324 Professional Educational Services – Employee Training and Development Services			579,394.62	579,394.62
<b>Total Purchased Professional and Technical Services</b>	<b>\$612,016.25</b>	<b>\$687,500.25</b>	<b>\$618,188.90</b>	<b>\$1,917,705.40</b>
<b>500 Other Purchased Services</b>				
568 Tuition To Private Residential Rehabilitative Institutions (PRRI) [In-State] and Detention Centers	17,066.00	942,241.19		959,307.19
580 Travel		6,053.55	534.07	6,587.62
<b>Total Other Purchased Services</b>	<b>\$17,066.00</b>	<b>\$948,294.74</b>	<b>\$534.07</b>	<b>\$965,894.81</b>
<b>600 Supplies</b>				
610 General Supplies	14,456.35	23,945.16	24,695.00	63,096.51
640 Books and Periodicals	19,903.75	9,442.92		29,346.67
650 Supplies & Fees – Technology Related	829.94	548.00		1,377.94
<b>Total Supplies</b>	<b>\$35,190.04</b>	<b>\$33,936.08</b>	<b>\$24,695.00</b>	<b>\$93,821.12</b>
<b>700 Property</b>				
750 Equipment – Original and Additional	1,098.01	1,276.86	57,824.52	60,199.39
<b>Total Property</b>	<b>\$1,098.01</b>	<b>\$1,276.86</b>	<b>\$57,824.52</b>	<b>\$60,199.39</b>
<b>Total 1241 Learning Support – Public</b>	<b>\$9,983,064.45</b>	<b>\$11,148,131.43</b>	<b>\$3,319,747.50</b>	<b>\$24,450,943.38</b>



**General Fund (10)**

**1243 Gifted Support**

	<u>Elementary</u>	<u>Secondary</u>	<u>Federal</u>	<u>Total</u>
<b>100 Personnel Services – Salaries</b>				
100 Personnel Services – Salaries	837,638.53	64,969.27		902,607.80
<b>Total Personnel Services – Salaries</b>	<b>\$837,638.53</b>	<b>\$64,969.27</b>		<b>\$902,607.80</b>
<b>200 Personnel Services – Employee Benefits</b>				
220 Social Security Contributions	61,900.04	4,822.60		66,722.64
230 PSERS Retirement Contributions	218,036.06	16,766.53		234,802.59
250 Unemployment Compensation	163.37	14.08		177.45
260 Workers' Compensation	4,869.31	391.26		5,260.57
270 Group Insurance – Self-Insurance	125,176.62	11,055.91		136,232.53
290 Other Current Employee Benefits	1,718.28	382.93		2,101.21
<b>Total Personnel Services – Employee Benefits</b>	<b>\$411,863.68</b>	<b>\$33,433.31</b>		<b>\$445,296.99</b>
<b>600 Supplies</b>				
610 General Supplies	2,915.41	348.90		3,264.31
620 Energy	297.50			297.50
<b>Total Supplies</b>	<b>\$3,212.91</b>	<b>\$348.90</b>		<b>\$3,561.81</b>
<b>Total 1243 Gifted Support</b>	<b>\$1,252,715.12</b>	<b>\$98,751.48</b>		<b>\$1,351,466.60</b>

**General Fund (10)**

**1270 Multi-Handicapped Support**

	<u>Elementary</u>	<u>Secondary</u>	<u>Federal</u>	<u>Total</u>
<b>100 Personnel Services – Salaries</b>				
100 Personnel Services – Salaries	98,951.50	124,343.47		223,294.97
<b>Total Personnel Services – Salaries</b>	<b>\$98,951.50</b>	<b>\$124,343.47</b>		<b>\$223,294.97</b>
<b>200 Personnel Services – Employee Benefits</b>				
220 Social Security Contributions	7,169.05	9,005.05		16,174.10
230 PSERS Retirement Contributions	25,569.17	31,859.03		57,428.20
250 Unemployment Compensation	77.00	80.15		157.15
260 Workers' Compensation	1,668.35	2,302.68		3,971.03
270 Group Insurance – Self-Insurance	45,944.38	34,101.94		80,046.32
<b>Total Personnel Services – Employee Benefits</b>	<b>\$80,427.95</b>	<b>\$77,348.85</b>		<b>\$157,776.80</b>
<b>600 Supplies</b>				
610 General Supplies	1,980.36	1,077.56		3,057.92
<b>Total Supplies</b>	<b>\$1,980.36</b>	<b>\$1,077.56</b>		<b>\$3,057.92</b>
<b>700 Property</b>				
750 Equipment – Original and Additional	2,977.50			2,977.50
<b>Total Property</b>	<b>\$2,977.50</b>			<b>\$2,977.50</b>
<b>Total 1270 Multi-Handicapped Support</b>	<b>\$184,337.31</b>	<b>\$202,769.88</b>		<b>\$387,107.19</b>

LEA : 122092102 Central Bucks SD

Printed 10/27/2016 10:23:56 AM

Page - 15 of 24

**General Fund (10)**

	<u>Elementary</u>	<u>Secondary</u>	<u>Federal</u>	<u>Total</u>
<b>1290 Special Programs - Other Support</b>				
<b>100 Personnel Services – Salaries</b>				
100 Personnel Services – Salaries	1,178,752.17	1,717,358.42		2,896,110.59
<b>Total Personnel Services – Salaries</b>	<b>\$1,178,752.17</b>	<b>\$1,717,358.42</b>		<b>\$2,896,110.59</b>
<b>200 Personnel Services – Employee Benefits</b>				
220 Social Security Contributions	86,202.72	124,480.86		210,683.58
230 PSERS Retirement Contributions	299,478.68	442,545.20		742,023.88
250 Unemployment Compensation	1,230.53	1,299.70		2,530.23
260 Workers' Compensation	31,756.74	43,286.40		75,043.14
270 Group Insurance – Self-Insurance	343,293.27	492,484.16		835,777.43
<b>Total Personnel Services – Employee Benefits</b>	<b>\$761,961.94</b>	<b>\$1,104,096.32</b>		<b>\$1,866,058.26</b>
<b>300 Purchased Professional and Technical Services</b>				
330 Other Professional Services	1,331,886.63			1,331,886.63
<b>Total Purchased Professional and Technical Services</b>	<b>\$1,331,886.63</b>			<b>\$1,331,886.63</b>
<b>400 Purchased Property Services</b>				
430 Repairs and Maintenance Services	2,632.76	1,300.09		3,932.85
440 Rentals	3,000.00			3,000.00
<b>Total Purchased Property Services</b>	<b>\$5,632.76</b>	<b>\$1,300.09</b>		<b>\$6,932.85</b>
<b>500 Other Purchased Services</b>				
530 Communications	125.00			125.00
562 Tuition To Pennsylvania Charter Schools	67,936.41	313,092.28		381,028.69
567 Tuition To Approved Private Schools (APS) and PA Chartered Schools for the Deaf and Blind	110,490.09	114,999.88		225,489.97
580 Travel	24,439.54			24,439.54
594 IU Payment By Withholding for Institutionalized Children's Programs – Special Classes	3,213.58	3,344.75		6,558.33
<b>Total Other Purchased Services</b>	<b>\$206,204.62</b>	<b>\$431,436.91</b>		<b>\$637,641.53</b>
<b>600 Supplies</b>				
610 General Supplies	5,002.95	81.90		5,084.85
620 Energy	1,429.93	1,184.76		2,614.69
640 Books and Periodicals	2,004.70			2,004.70
<b>Total Supplies</b>	<b>\$8,437.58</b>	<b>\$1,266.66</b>		<b>\$9,704.24</b>
<b>700 Property</b>				
760 Equipment – Replacement	281.76			281.76
<b>Total Property</b>	<b>\$281.76</b>			<b>\$281.76</b>
<b>800 Other Objects</b>				
810 Dues and Fees	812.94			812.94
<b>Total Other Objects</b>	<b>\$812.94</b>			<b>\$812.94</b>
<b>Total 1290 Special Programs - Other Support</b>	<b>\$3,493,970.40</b>	<b>\$3,255,458.40</b>		<b>\$6,749,428.80</b>

General Fund (10)

1300 Vocational Education

Elementary

Secondary

Federal

Total

500 Other Purchased Services

564 Tuition To Career and Technology Centers

4,324,342.73

4,324,342.73

**Total Other Purchased Services**

**\$4,324,342.73**

**\$4,324,342.73**

**Total 1300 Vocational Education**

**\$4,324,342.73**

**\$4,324,342.73**

**General Fund (10)**

	<u>Elementary</u>	<u>Secondary</u>	<u>Federal</u>	<u>Total</u>
<b>1400 Other Instructional Programs – Elementary / Secondary</b>				
<b>100 Personnel Services – Salaries</b>				
100 Personnel Services – Salaries	317,955.43	215,581.93		533,537.36
<b>Total Personnel Services – Salaries</b>	<b>\$317,955.43</b>	<b>\$215,581.93</b>		<b>\$533,537.36</b>
<b>200 Personnel Services – Employee Benefits</b>				
220 Social Security Contributions	23,168.93	16,254.98		39,423.91
230 PSERS Retirement Contributions	80,983.50	50,148.05		131,131.55
250 Unemployment Compensation	89.62	52.78		142.40
260 Workers' Compensation	2,267.89	1,552.47		3,820.36
270 Group Insurance – Self-Insurance	38,389.00	29,194.50		67,583.50
<b>Total Personnel Services – Employee Benefits</b>	<b>\$144,898.94</b>	<b>\$97,202.78</b>		<b>\$242,101.72</b>
<b>300 Purchased Professional and Technical Services</b>				
329 Professional Educational Services – Other		85,449.58		85,449.58
<b>Total Purchased Professional and Technical Services</b>		<b>\$85,449.58</b>		<b>\$85,449.58</b>
<b>500 Other Purchased Services</b>				
561 Tuition To Other School Districts Within the State		1,097.10		1,097.10
569 Tuition – Other	40,860.77	1,756,031.14		1,796,891.91
580 Travel	837.55	10,098.13		10,935.68
<b>Total Other Purchased Services</b>	<b>\$41,698.32</b>	<b>\$1,767,226.37</b>		<b>\$1,808,924.69</b>
<b>600 Supplies</b>				
610 General Supplies	11,616.14			11,616.14
<b>Total Supplies</b>	<b>\$11,616.14</b>			<b>\$11,616.14</b>
<b>Total 1400 Other Instructional Programs – Elementary / Secondary</b>	<b>\$516,168.83</b>	<b>\$2,165,460.66</b>		<b>\$2,681,629.49</b>

General Fund (10)

1420 Summer School

100 Personnel Services – Salaries

100 Personnel Services – Salaries

Total Personnel Services – Salaries

200 Personnel Services – Employee Benefits

220 Social Security Contributions

230 PSERS Retirement Contributions

Total Personnel Services – Employee Benefits

Total 1420 Summer School

	<u>Elementary</u>	<u>Secondary</u>	<u>Federal</u>	<u>Total</u>
	3,975.00	517.76		4,492.76
	<b>\$3,975.00</b>	<b>\$517.76</b>		<b>\$4,492.76</b>
	39.61	304.09		343.70
	133.79	1,027.14		1,160.93
	<b>\$173.40</b>	<b>\$1,331.23</b>		<b>\$1,504.63</b>
	<b>\$4,148.40</b>	<b>\$1,848.99</b>		<b>\$5,997.39</b>

**General Fund (10)**

	<u>Elementary</u>	<u>Secondary</u>	<u>Federal</u>	<u>Total</u>
<b>1430 Homebound Instruction</b>				
<b>100 Personnel Services – Salaries</b>				
100 Personnel Services – Salaries	9,217.80	59,437.20		68,655.00
<b>Total Personnel Services – Salaries</b>	<b>\$9,217.80</b>	<b>\$59,437.20</b>		<b>\$68,655.00</b>
<b>200 Personnel Services – Employee Benefits</b>				
220 Social Security Contributions	693.62	4,517.45		5,211.07
230 PSERS Retirement Contributions	2,098.94	8,906.98		11,005.92
250 Unemployment Compensation	15.87	23.28		39.15
260 Workers' Compensation	139.54	701.13		840.67
<b>Total Personnel Services – Employee Benefits</b>	<b>\$2,947.97</b>	<b>\$14,148.84</b>		<b>\$17,096.81</b>
<b>300 Purchased Professional and Technical Services</b>				
329 Professional Educational Services – Other		85,449.58		85,449.58
<b>Total Purchased Professional and Technical Services</b>		<b>\$85,449.58</b>		<b>\$85,449.58</b>
<b>500 Other Purchased Services</b>				
580 Travel	228.74	10,098.13		10,326.87
<b>Total Other Purchased Services</b>	<b>\$228.74</b>	<b>\$10,098.13</b>		<b>\$10,326.87</b>
<b>Total 1430 Homebound Instruction</b>	<b>\$12,394.51</b>	<b>\$169,133.75</b>		<b>\$181,528.26</b>

General Fund (10)

1440 Alternative Regular Education Programs

500 Other Purchased Services

	<u>Elementary</u>	<u>Secondary</u>	<u>Federal</u>	<u>Total</u>
561 Tuition To Other School Districts Within the State		1,097.10		1,097.10
569 Tuition – Other	40,860.77	1,756,031.14		1,796,891.91
<b>Total Other Purchased Services</b>	<b>\$40,860.77</b>	<b>\$1,757,128.24</b>		<b>\$1,797,989.01</b>
<b>Total 1440 Alternative Regular Education Programs</b>	<b>\$40,860.77</b>	<b>\$1,757,128.24</b>		<b>\$1,797,989.01</b>



General Fund (10)

1441 Adjudicated / Court-Placed Programs

Elementary

Secondary

Federal

Total

500 Other Purchased Services

561 Tuition To Other School Districts Within the State

1,097.10

1,097.10

569 Tuition - Other

356,536.95

356,536.95

**Total Other Purchased Services**

**\$357,634.05**

**\$357,634.05**

**Total 1441 Adjudicated / Court-Placed Programs**

**\$357,634.05**

**\$357,634.05**

General Fund (10)

	<u>Elementary</u>	<u>Secondary</u>	<u>Federal</u>	<u>Total</u>
<b>1442 Alternative Education Programs</b>				
<b>500 Other Purchased Services</b>				
569 Tuition – Other	40,860.77	1,399,494.19		1,440,354.96
<b>Total Other Purchased Services</b>	<b>\$40,860.77</b>	<b>\$1,399,494.19</b>		<b>\$1,440,354.96</b>
<b>Total 1442 Alternative Education Programs</b>	<b>\$40,860.77</b>	<b>\$1,399,494.19</b>		<b>\$1,440,354.96</b>

General Fund (10)

	<u>Elementary</u>	<u>Secondary</u>	<u>Federal</u>	<u>Total</u>
<b>1490 Additional Other Instructional Programs</b>				
<b>100 Personnel Services – Salaries</b>				
100 Personnel Services – Salaries	304,762.63	155,626.97		460,389.60
<b>Total Personnel Services – Salaries</b>	<b>\$304,762.63</b>	<b>\$155,626.97</b>		<b>\$460,389.60</b>
<b>200 Personnel Services – Employee Benefits</b>				
220 Social Security Contributions	22,435.70	11,433.44		33,869.14
230 PSERS Retirement Contributions	78,750.77	40,213.93		118,964.70
250 Unemployment Compensation	73.75	29.50		103.25
260 Workers' Compensation	2,128.35	851.34		2,979.69
270 Group Insurance – Self-Insurance	38,389.00	29,194.50		67,583.50
<b>Total Personnel Services – Employee Benefits</b>	<b>\$141,777.57</b>	<b>\$81,722.71</b>		<b>\$223,500.28</b>
<b>500 Other Purchased Services</b>				
580 Travel	608.81			608.81
<b>Total Other Purchased Services</b>	<b>\$608.81</b>			<b>\$608.81</b>
<b>600 Supplies</b>				
610 General Supplies	11,616.14			11,616.14
<b>Total Supplies</b>	<b>\$11,616.14</b>			<b>\$11,616.14</b>
<b>Total 1490 Additional Other Instructional Programs</b>	<b>\$458,765.15</b>	<b>\$237,349.68</b>		<b>\$696,114.83</b>

LEA : 122092102 Central Bucks SD

Printed 10/27/2016 10:23:56 AM

General Fund (10)

1500 Nonpublic School Programs

500 Other Purchased Services

592 Services Purchased From Another LEA Within the State

Total Other Purchased Services

Total 1500 Nonpublic School Programs

Elementary

Secondary

Federal

Total

10,069.00

10,069.00

\$10,069.00

\$10,069.00

\$10,069.00

\$10,069.00

General Fund (10)

2000 Support Services

Total

100 Personnel Services – Salaries

100 Personnel Services – Salaries 41,200,799.38

Total Personnel Services – Salaries \$41,200,799.38

200 Personnel Services – Employee Benefits

220 Social Security Contributions 3,022,212.17

230 PSERS Retirement Contributions 10,615,387.21

240 Tuition Reimbursement 299,751.93

250 Unemployment Compensation 14,507.75

260 Workers’ Compensation 331,950.21

270 Group Insurance – Self-Insurance 7,348,436.20

290 Other Current Employee Benefits 234,028.29

Total Personnel Services – Employee Benefits \$21,866,273.76

300 Purchased Professional and Technical Services

310 Official / Administrative Services 793,253.07

329 Professional Educational Services – Other 41,956.25

330 Other Professional Services 568,937.32

340 Technical Services 156,525.04

350 Security / Safety Services 50,277.06

Total Purchased Professional and Technical Services \$1,610,948.74

400 Purchased Property Services

410 Cleaning Services 619,243.45

420 Utility Services 2,333,141.28

430 Repairs and Maintenance Services 1,508,995.77

440 Rentals 76,408.62

460 Extermination Services 24,000.00

490 Other Purchased Property Services 398,500.59

Total Purchased Property Services \$4,960,289.71

500 Other Purchased Services

511 Student Transportation Services from Another LEA Within the State 172,607.76

513 Contracted Carriers 8,519,367.54

516 Student Transportation Services From the IU 342,672.77

520 Insurance – General 217,346.00

521 Fire Insurance 348,482.00

522 Automotive Liability Insurance 183,160.00

523 General Property and Liability Insurance 228,388.00

529 Other Insurance 15,171.00

530 Communications 604,151.18

549 Other Advertising/Public Relations 23,837.02

550 Printing and Binding 10,335.19

580 Travel 70,766.40

595 IU Payments By Withholding 148,273.60

596 Direct Payments To Intermediate Units 89,539.00

Total Other Purchased Services \$10,974,097.46

**General Fund (10)**

**2000 Support Services**

**Total**

**600 Supplies**

610 General Supplies	2,517,031.56
620 Energy	1,222,833.76
630 Food	10,892.38
640 Books and Periodicals	137,849.82
650 Supplies & Fees – Technology Related	74,023.28

<b>Total Supplies</b>	<b>\$3,962,630.80</b>
-----------------------	-----------------------

**700 Property**

750 Equipment – Original and Additional	149,767.63
760 Equipment – Replacement	111,671.28

<b>Total Property</b>	<b>\$261,438.91</b>
-----------------------	---------------------

**800 Other Objects**

810 Dues and Fees	48,621.75
-------------------	-----------

<b>Total Other Objects</b>	<b>\$48,621.75</b>
----------------------------	--------------------

<b>Total 2000 Support Services</b>	<b>\$84,885,100.51</b>
------------------------------------	------------------------

**General Fund (10)**

**2100 Support Services – Students**

**100 Personnel Services – Salaries**

	<u>Elementary</u>	<u>Secondary</u>	<u>Federal</u>	<u>Total</u>
100 Personnel Services – Salaries	3,827,058.22	3,926,399.41		8,091,219.56
<b>Total Personnel Services – Salaries</b>	<b>\$3,827,058.22</b>	<b>\$3,926,399.41</b>		<b>\$8,091,219.56</b>

**200 Personnel Services – Employee Benefits**

220 Social Security Contributions	278,193.44	286,742.24		588,992.43
230 PSERS Retirement Contributions	987,114.43	1,005,617.42		2,078,496.97
250 Unemployment Compensation	678.84	783.35		1,565.99
260 Workers' Compensation	20,960.24	23,442.94		49,161.22
270 Group Insurance – Self-Insurance	660,498.74	685,906.59		1,503,688.32
290 Other Current Employee Benefits	13,179.91	13,717.88		26,897.79
<b>Total Personnel Services – Employee Benefits</b>	<b>\$1,960,625.60</b>	<b>\$2,016,210.42</b>		<b>\$4,248,802.72</b>

**300 Purchased Professional and Technical Services**

329 Professional Educational Services – Other	7,571.36	7,880.39		15,451.75
330 Other Professional Services	24,887.22	25,903.03		50,790.25
<b>Total Purchased Professional and Technical Services</b>	<b>\$32,458.58</b>	<b>\$33,783.42</b>		<b>\$66,242.00</b>

**400 Purchased Property Services**

430 Repairs and Maintenance Services	380.22	395.73		775.95
<b>Total Purchased Property Services</b>	<b>\$380.22</b>	<b>\$395.73</b>		<b>\$775.95</b>

**500 Other Purchased Services**

580 Travel	468.88	488.02		956.90
<b>Total Other Purchased Services</b>	<b>\$468.88</b>	<b>\$488.02</b>		<b>\$956.90</b>

**600 Supplies**

610 General Supplies	25,178.68	26,907.41		52,086.09
630 Food	380.25	395.77		776.02
640 Books and Periodicals	4,915.56	4,537.44		9,453.00
<b>Total Supplies</b>	<b>\$30,474.49</b>	<b>\$31,840.62</b>		<b>\$62,315.11</b>

**Total 2100 Support Services – Students**

<b>Total 2100 Support Services – Students</b>	<b>\$5,851,465.99</b>	<b>\$6,009,117.62</b>		<b>\$12,470,312.24</b>
---	-----------------------	-----------------------	--	------------------------

General Fund (10)

	<u>Elementary</u>	<u>Secondary</u>	<u>Federal</u>	<u>Total</u>
<b>2110 Supervision of Student Services</b>				
<b>100 Personnel Services – Salaries</b>				
100 Personnel Services – Salaries	95,733.60	99,641.10		195,374.70
<b>Total Personnel Services – Salaries</b>	<b>\$95,733.60</b>	<b>\$99,641.10</b>		<b>\$195,374.70</b>
<b>200 Personnel Services – Employee Benefits</b>				
220 Social Security Contributions	5,669.14	5,900.53		11,569.67
230 PSERS Retirement Contributions	19,926.77	20,740.10		40,666.87
250 Unemployment Compensation	18.25	19.00		37.25
260 Workers' Compensation	526.80	548.30		1,075.10
270 Group Insurance – Self-Insurance	13,548.86	14,101.88		27,650.74
290 Other Current Employee Benefits	999.49	1,040.30		2,039.79
<b>Total Personnel Services – Employee Benefits</b>	<b>\$40,689.31</b>	<b>\$42,350.11</b>		<b>\$83,039.42</b>
<b>Total 2110 Supervision of Student Services</b>	<b>\$136,422.91</b>	<b>\$141,991.21</b>		<b>\$278,414.12</b>



General Fund (10)

	<u>Elementary</u>	<u>Secondary</u>	<u>Federal</u>	<u>Total</u>
<b>2111 Supervision of Student Services – Head of Component</b>				
<b>100 Personnel Services – Salaries</b>				
100 Personnel Services – Salaries	95,733.60	99,641.10		195,374.70
<b>Total Personnel Services – Salaries</b>	<b>\$95,733.60</b>	<b>\$99,641.10</b>		<b>\$195,374.70</b>
<b>200 Personnel Services – Employee Benefits</b>				
220 Social Security Contributions	5,669.14	5,900.53		11,569.67
230 PSERS Retirement Contributions	19,926.77	20,740.10		40,666.87
250 Unemployment Compensation	18.25	19.00		37.25
260 Workers' Compensation	526.80	548.30		1,075.10
270 Group Insurance – Self-Insurance	13,548.86	14,101.88		27,650.74
290 Other Current Employee Benefits	999.49	1,040.30		2,039.79
<b>Total Personnel Services – Employee Benefits</b>	<b>\$40,689.31</b>	<b>\$42,350.11</b>		<b>\$83,039.42</b>
<b>Total 2111 Supervision of Student Services – Head of Component</b>	<b>\$136,422.91</b>	<b>\$141,991.21</b>		<b>\$278,414.12</b>

**General Fund (10)**

**2120 Guidance Services**

**100 Personnel Services – Salaries**

	<u>Elementary</u>	<u>Secondary</u>	<u>Federal</u>	<u>Total</u>
100 Personnel Services – Salaries	1,678,687.45	3,068,235.56		4,746,923.01
<b>Total Personnel Services – Salaries</b>	<b>\$1,678,687.45</b>	<b>\$3,068,235.56</b>		<b>\$4,746,923.01</b>

**200 Personnel Services – Employee Benefits**

220 Social Security Contributions	123,897.68	226,298.78		350,196.46
230 PSERS Retirement Contributions	433,306.37	791,872.84		1,225,179.21
250 Unemployment Compensation	234.00	595.38		829.38
260 Workers' Compensation	8,178.40	18,682.31		26,860.71
270 Group Insurance – Self-Insurance	280,349.88	553,846.00		834,195.88
<b>Total Personnel Services – Employee Benefits</b>	<b>\$845,966.33</b>	<b>\$1,591,295.31</b>		<b>\$2,437,261.64</b>

**300 Purchased Professional and Technical Services**

329 Professional Educational Services – Other	7,571.36	7,880.39		15,451.75
<b>Total Purchased Professional and Technical Services</b>	<b>\$7,571.36</b>	<b>\$7,880.39</b>		<b>\$15,451.75</b>

**600 Supplies**

610 General Supplies	3,517.40	4,361.99		7,879.39
<b>Total Supplies</b>	<b>\$3,517.40</b>	<b>\$4,361.99</b>		<b>\$7,879.39</b>
<b>Total 2120 Guidance Services</b>	<b>\$2,535,742.54</b>	<b>\$4,671,773.25</b>		<b>\$7,207,515.79</b>

General Fund (10)

2130 Attendance Services

Elementary

Secondary

Federal

Total

100 Personnel Services – Salaries

100 Personnel Services – Salaries

337,761.93

**Total Personnel Services – Salaries**

**\$337,761.93**

200 Personnel Services – Employee Benefits

220 Social Security Contributions

24,056.75

230 PSERS Retirement Contributions

85,765.12

250 Unemployment Compensation

103.80

260 Workers' Compensation

4,758.04

270 Group Insurance – Self-Insurance

157,282.99

**Total Personnel Services – Employee Benefits**

**\$271,966.70**

**Total 2130 Attendance Services**

**\$609,728.63**

**General Fund (10)**

	<u>Elementary</u>	<u>Secondary</u>	<u>Federal</u>	<u>Total</u>
<b>2140 Psychological Services</b>				
<b>100 Personnel Services – Salaries</b>				
100 Personnel Services – Salaries	813,083.83	326,656.59		1,139,740.42
<b>Total Personnel Services – Salaries</b>	<b>\$813,083.83</b>	<b>\$326,656.59</b>		<b>\$1,139,740.42</b>
<b>200 Personnel Services – Employee Benefits</b>				
220 Social Security Contributions	59,963.45	23,943.43		83,906.88
230 PSERS Retirement Contributions	216,564.40	84,378.66		300,943.06
250 Unemployment Compensation	150.09	71.27		221.36
260 Workers' Compensation	4,985.24	1,740.48		6,725.72
270 Group Insurance – Self-Insurance	156,516.50	59,618.93		216,135.43
<b>Total Personnel Services – Employee Benefits</b>	<b>\$438,179.68</b>	<b>\$169,752.77</b>		<b>\$607,932.45</b>
<b>500 Other Purchased Services</b>				
580 Travel	285.42	297.07		582.49
<b>Total Other Purchased Services</b>	<b>\$285.42</b>	<b>\$297.07</b>		<b>\$582.49</b>
<b>600 Supplies</b>				
610 General Supplies	19,529.03	20,326.13		39,855.16
640 Books and Periodicals	4,915.56	4,537.44		9,453.00
<b>Total Supplies</b>	<b>\$24,444.59</b>	<b>\$24,863.57</b>		<b>\$49,308.16</b>
<b>Total 2140 Psychological Services</b>	<b>\$1,275,993.52</b>	<b>\$521,570.00</b>		<b>\$1,797,563.52</b>

General Fund (10)

2150 Speech Pathology and Audiology Services

100 Personnel Services – Salaries

100 Personnel Services – Salaries

Elementary

Secondary

Federal

Total

1,056,721.23

241,571.52

1,298,292.75

Total Personnel Services – Salaries

\$1,056,721.23

\$241,571.52

\$1,298,292.75

200 Personnel Services – Employee Benefits

220 Social Security Contributions

76,752.62

18,202.80

94,955.42

230 PSERS Retirement Contributions

272,881.33

62,376.57

335,257.90

250 Unemployment Compensation

251.39

71.56

322.95

260 Workers' Compensation

6,545.13

1,717.60

8,262.73

270 Group Insurance – Self-Insurance

187,869.10

35,218.67

223,087.77

Total Personnel Services – Employee Benefits

\$544,299.57

\$117,587.20

\$661,886.77

Total 2150 Speech Pathology and Audiology Services

\$1,601,020.80

\$359,158.72

\$1,960,179.52

**General Fund (10)**

	<u>Elementary</u>	<u>Secondary</u>	<u>Federal</u>	<u>Total</u>
<b>2190 Other Student Services</b>				
<b>100 Personnel Services – Salaries</b>				
100 Personnel Services – Salaries	182,832.11	190,294.64		373,126.75
<b>Total Personnel Services – Salaries</b>	<b>\$182,832.11</b>	<b>\$190,294.64</b>		<b>\$373,126.75</b>
<b>200 Personnel Services – Employee Benefits</b>				
220 Social Security Contributions	11,910.55	12,396.70		24,307.25
230 PSERS Retirement Contributions	44,435.56	46,249.25		90,684.81
250 Unemployment Compensation	25.11	26.14		51.25
260 Workers' Compensation	724.67	754.25		1,478.92
270 Group Insurance – Self-Insurance	22,214.40	23,121.11		45,335.51
290 Other Current Employee Benefits	12,180.42	12,677.58		24,858.00
<b>Total Personnel Services – Employee Benefits</b>	<b>\$91,490.71</b>	<b>\$95,225.03</b>		<b>\$186,715.74</b>
<b>300 Purchased Professional and Technical Services</b>				
330 Other Professional Services	24,887.22	25,903.03		50,790.25
<b>Total Purchased Professional and Technical Services</b>	<b>\$24,887.22</b>	<b>\$25,903.03</b>		<b>\$50,790.25</b>
<b>400 Purchased Property Services</b>				
430 Repairs and Maintenance Services	380.22	395.73		775.95
<b>Total Purchased Property Services</b>	<b>\$380.22</b>	<b>\$395.73</b>		<b>\$775.95</b>
<b>500 Other Purchased Services</b>				
580 Travel	183.46	190.95		374.41
<b>Total Other Purchased Services</b>	<b>\$183.46</b>	<b>\$190.95</b>		<b>\$374.41</b>
<b>600 Supplies</b>				
610 General Supplies	2,132.25	2,219.29		4,351.54
630 Food	380.25	395.77		776.02
<b>Total Supplies</b>	<b>\$2,512.50</b>	<b>\$2,615.06</b>		<b>\$5,127.56</b>
<b>Total 2190 Other Student Services</b>	<b>\$302,286.22</b>	<b>\$314,624.44</b>		<b>\$616,910.66</b>

**General Fund (10)**

**2200 Support Services – Instructional Staff**

	<u>Elementary</u>	<u>Secondary</u>	<u>Federal</u>	<u>Total</u>
<b>100 Personnel Services – Salaries</b>				
100 Personnel Services – Salaries	3,589,354.53	2,699,173.61	6,703.10	6,295,231.24
<b>Total Personnel Services – Salaries</b>	<b>\$3,589,354.53</b>	<b>\$2,699,173.61</b>	<b>\$6,703.10</b>	<b>\$6,295,231.24</b>
<b>200 Personnel Services – Employee Benefits</b>				
220 Social Security Contributions	261,283.52	195,221.23	512.79	457,017.54
230 PSERS Retirement Contributions	902,610.92	671,449.94	6,702.84	1,580,763.70
240 Tuition Reimbursement	106,514.67	110,862.21		217,376.88
250 Unemployment Compensation	737.58	439.66		1,177.24
260 Workers' Compensation	23,338.53	15,910.73		39,249.26
270 Group Insurance – Self-Insurance	479,735.51	322,625.29		802,360.80
290 Other Current Employee Benefits	11,802.89	12,350.56		24,153.45
<b>Total Personnel Services – Employee Benefits</b>	<b>\$1,786,023.62</b>	<b>\$1,328,859.62</b>	<b>\$7,215.63</b>	<b>\$3,122,098.87</b>
<b>300 Purchased Professional and Technical Services</b>				
329 Professional Educational Services – Other	14,659.50		11,345.00	26,004.50
340 Technical Services	11,992.75	12,482.25		24,475.00
<b>Total Purchased Professional and Technical Services</b>	<b>\$26,652.25</b>	<b>\$12,482.25</b>	<b>\$11,345.00</b>	<b>\$50,479.50</b>
<b>400 Purchased Property Services</b>				
430 Repairs and Maintenance Services	6,500.17	26,782.99		33,283.16
<b>Total Purchased Property Services</b>	<b>\$6,500.17</b>	<b>\$26,782.99</b>		<b>\$33,283.16</b>
<b>500 Other Purchased Services</b>				
530 Communications	50,678.02	52,746.52		103,424.54
580 Travel	2,827.29	3,847.18	18,624.44	25,298.91
<b>Total Other Purchased Services</b>	<b>\$53,505.31</b>	<b>\$56,593.70</b>	<b>\$18,624.44</b>	<b>\$128,723.45</b>
<b>600 Supplies</b>				
610 General Supplies	45,222.74	54,150.92		99,373.66
630 Food	925.91	854.68		1,780.59
640 Books and Periodicals	73,957.12	50,576.47		124,533.59
650 Supplies & Fees – Technology Related	30,300.00	43,723.28		74,023.28
<b>Total Supplies</b>	<b>\$150,405.77</b>	<b>\$149,305.35</b>		<b>\$299,711.12</b>
<b>700 Property</b>				
750 Equipment – Original and Additional	21,450.35	42,584.73		64,035.08
760 Equipment – Replacement	9,845.90	26,173.37		36,019.27
<b>Total Property</b>	<b>\$31,296.25</b>	<b>\$68,758.10</b>		<b>\$100,054.35</b>
<b>800 Other Objects</b>				
810 Dues and Fees	180.94	1,700.79		1,881.73
<b>Total Other Objects</b>	<b>\$180.94</b>	<b>\$1,700.79</b>		<b>\$1,881.73</b>
<b>Total 2200 Support Services – Instructional Staff</b>	<b>\$5,643,918.84</b>	<b>\$4,343,656.41</b>	<b>\$43,888.17</b>	<b>\$10,031,463.42</b>

**General Fund (10)**

	<u>Elementary</u>	<u>Secondary</u>	<u>Federal</u>	<u>Total</u>
<b>2220 Technology Support Services</b>				
<b>100 Personnel Services – Salaries</b>				
100 Personnel Services – Salaries	51,403.24	53,501.34		104,904.58
<b>Total Personnel Services – Salaries</b>	<b>\$51,403.24</b>	<b>\$53,501.34</b>		<b>\$104,904.58</b>
<b>200 Personnel Services – Employee Benefits</b>				
220 Social Security Contributions	3,556.95	3,702.13		7,259.08
230 PSERS Retirement Contributions	13,282.63	13,824.77		27,107.40
250 Unemployment Compensation	7.23	7.52		14.75
260 Workers' Compensation	208.58	217.09		425.67
270 Group Insurance – Self-Insurance	7,152.65	7,444.60		14,597.25
290 Other Current Employee Benefits	517.45	538.58		1,056.03
<b>Total Personnel Services – Employee Benefits</b>	<b>\$24,725.49</b>	<b>\$25,734.69</b>		<b>\$50,460.18</b>
<b>600 Supplies</b>				
610 General Supplies	3,283.85	8,199.96		11,483.81
<b>Total Supplies</b>	<b>\$3,283.85</b>	<b>\$8,199.96</b>		<b>\$11,483.81</b>
<b>700 Property</b>				
750 Equipment – Original and Additional	9,151.24	22,442.56		31,593.80
760 Equipment – Replacement	2,615.77	342.22		2,957.99
<b>Total Property</b>	<b>\$11,767.01</b>	<b>\$22,784.78</b>		<b>\$34,551.79</b>
<b>Total 2220 Technology Support Services</b>	<b>\$91,179.59</b>	<b>\$110,220.77</b>		<b>\$201,400.36</b>



**General Fund (10)**

**2240 Computer-Assisted Instruction Support Services**

	<u>Elementary</u>	<u>Secondary</u>	<u>Federal</u>	<u>Total</u>
<b>100 Personnel Services – Salaries</b>				
100 Personnel Services – Salaries	529,683.53	551,774.25		1,081,457.78
<b>Total Personnel Services – Salaries</b>	<b>\$529,683.53</b>	<b>\$551,774.25</b>		<b>\$1,081,457.78</b>
<b>200 Personnel Services – Employee Benefits</b>				
220 Social Security Contributions	39,751.21	41,413.99		81,165.20
230 PSERS Retirement Contributions	127,912.77	131,982.68		259,895.45
250 Unemployment Compensation	15.41	8.19		23.60
260 Workers' Compensation	4,312.21	4,595.21		8,907.42
270 Group Insurance – Self-Insurance	17,861.33	18,292.47		36,153.80
290 Other Current Employee Benefits	1,579.53	1,644.00		3,223.53
<b>Total Personnel Services – Employee Benefits</b>	<b>\$191,432.46</b>	<b>\$197,936.54</b>		<b>\$389,369.00</b>
<b>300 Purchased Professional and Technical Services</b>				
340 Technical Services	5,451.25	5,673.75		11,125.00
<b>Total Purchased Professional and Technical Services</b>	<b>\$5,451.25</b>	<b>\$5,673.75</b>		<b>\$11,125.00</b>
<b>400 Purchased Property Services</b>				
430 Repairs and Maintenance Services	3,190.00	23,262.83		26,452.83
<b>Total Purchased Property Services</b>	<b>\$3,190.00</b>	<b>\$23,262.83</b>		<b>\$26,452.83</b>
<b>500 Other Purchased Services</b>				
530 Communications	50,678.02	52,746.52		103,424.54
<b>Total Other Purchased Services</b>	<b>\$50,678.02</b>	<b>\$52,746.52</b>		<b>\$103,424.54</b>
<b>600 Supplies</b>				
610 General Supplies	38,487.70	41,660.85		80,148.55
640 Books and Periodicals	15,390.00	8,349.64		23,739.64
650 Supplies & Fees – Technology Related	30,300.00	35,034.00		65,334.00
<b>Total Supplies</b>	<b>\$84,177.70</b>	<b>\$85,044.49</b>		<b>\$169,222.19</b>
<b>700 Property</b>				
750 Equipment – Original and Additional	11,597.47	19,614.50		31,211.97
760 Equipment – Replacement	984.01	25,831.15		26,815.16
<b>Total Property</b>	<b>\$12,581.48</b>	<b>\$45,445.65</b>		<b>\$58,027.13</b>
<b>Total 2240 Computer-Assisted Instruction Support Services</b>	<b>\$877,194.44</b>	<b>\$961,884.03</b>		<b>\$1,839,078.47</b>

**General Fund (10)**

**2250 School Library Services**

	<u>Elementary</u>	<u>Secondary</u>	<u>Federal</u>	<u>Total</u>
<b>100 Personnel Services – Salaries</b>				
100 Personnel Services – Salaries	1,728,975.69	759,437.13		2,488,412.82
<b>Total Personnel Services – Salaries</b>	<b>\$1,728,975.69</b>	<b>\$759,437.13</b>		<b>\$2,488,412.82</b>
<b>200 Personnel Services – Employee Benefits</b>				
220 Social Security Contributions	127,454.99	56,386.68		183,841.67
230 PSERS Retirement Contributions	444,153.62	196,152.44		640,306.06
250 Unemployment Compensation	487.75	191.75		679.50
260 Workers' Compensation	13,335.77	5,533.71		18,869.48
270 Group Insurance – Self-Insurance	290,780.87	131,375.25		422,156.12
<b>Total Personnel Services – Employee Benefits</b>	<b>\$876,213.00</b>	<b>\$389,639.83</b>		<b>\$1,265,852.83</b>
<b>400 Purchased Property Services</b>				
430 Repairs and Maintenance Services		74.88		74.88
<b>Total Purchased Property Services</b>		<b>\$74.88</b>		<b>\$74.88</b>
<b>600 Supplies</b>				
610 General Supplies	1,177.82	1,350.92		2,528.74
640 Books and Periodicals	56,545.15	40,360.39		96,905.54
650 Supplies & Fees – Technology Related		8,689.28		8,689.28
<b>Total Supplies</b>	<b>\$57,722.97</b>	<b>\$50,400.59</b>		<b>\$108,123.56</b>
<b>700 Property</b>				
750 Equipment – Original and Additional	129.99			129.99
760 Equipment – Replacement	6,246.12			6,246.12
<b>Total Property</b>	<b>\$6,376.11</b>			<b>\$6,376.11</b>
<b>800 Other Objects</b>				
810 Dues and Fees		1,533.75		1,533.75
<b>Total Other Objects</b>		<b>\$1,533.75</b>		<b>\$1,533.75</b>
<b>Total 2250 School Library Services</b>	<b>\$2,669,287.77</b>	<b>\$1,201,086.18</b>		<b>\$3,870,373.95</b>

**General Fund (10)**

**2260 Instruction and Curriculum Development Services**

	<u>Elementary</u>	<u>Secondary</u>	<u>Federal</u>	<u>Total</u>
<b>100 Personnel Services – Salaries</b>				
100 Personnel Services – Salaries	570,488.09	588,771.28		1,159,259.37
<b>Total Personnel Services – Salaries</b>	<b>\$570,488.09</b>	<b>\$588,771.28</b>		<b>\$1,159,259.37</b>
<b>200 Personnel Services – Employee Benefits</b>				
220 Social Security Contributions	39,490.41	40,006.89		79,497.30
230 PSERS Retirement Contributions	141,947.66	144,656.06		286,603.72
250 Unemployment Compensation	84.88	82.21		167.09
260 Workers' Compensation	2,450.03	2,372.81		4,822.84
270 Group Insurance – Self-Insurance	84,017.19	81,369.32		165,386.51
290 Other Current Employee Benefits	5,780.94	6,016.89		11,797.83
<b>Total Personnel Services – Employee Benefits</b>	<b>\$273,771.11</b>	<b>\$274,504.18</b>		<b>\$548,275.29</b>
<b>300 Purchased Professional and Technical Services</b>				
329 Professional Educational Services – Other	11,109.50			11,109.50
<b>Total Purchased Professional and Technical Services</b>	<b>\$11,109.50</b>			<b>\$11,109.50</b>
<b>500 Other Purchased Services</b>				
580 Travel	355.00	365.87		720.87
<b>Total Other Purchased Services</b>	<b>\$355.00</b>	<b>\$365.87</b>		<b>\$720.87</b>
<b>600 Supplies</b>				
610 General Supplies	1,333.48	2,071.60		3,405.08
<b>Total Supplies</b>	<b>\$1,333.48</b>	<b>\$2,071.60</b>		<b>\$3,405.08</b>
<b>Total 2260 Instruction and Curriculum Development Services</b>	<b>\$857,057.18</b>	<b>\$865,712.93</b>		<b>\$1,722,770.11</b>

**General Fund (10)**

<b>2270 Instructional Staff Professional Development Services</b>	<u>Elementary</u>	<u>Secondary</u>	<u>Federal</u>	<u>Total</u>
<b>100 Personnel Services – Salaries</b>				
100 Personnel Services – Salaries	241,454.59	251,414.75	6,703.10	499,572.44
<b>Total Personnel Services – Salaries</b>	<b>\$241,454.59</b>	<b>\$251,414.75</b>	<b>\$6,703.10</b>	<b>\$499,572.44</b>
<b>200 Personnel Services – Employee Benefits</b>				
220 Social Security Contributions	17,689.40	18,450.12	512.79	36,652.31
230 PSERS Retirement Contributions	58,032.01	60,794.75	6,702.84	125,529.60
240 Tuition Reimbursement	106,514.67	110,862.21		217,376.88
250 Unemployment Compensation	30.36	31.59		61.95
260 Workers' Compensation	876.03	911.79		1,787.82
270 Group Insurance – Self-Insurance	22,888.39	23,822.60		46,710.99
<b>Total Personnel Services – Employee Benefits</b>	<b>\$206,030.86</b>	<b>\$214,873.06</b>	<b>\$7,215.63</b>	<b>\$428,119.55</b>
<b>300 Purchased Professional and Technical Services</b>				
329 Professional Educational Services – Other	3,550.00		11,345.00	14,895.00
340 Technical Services	6,541.50	6,808.50		13,350.00
<b>Total Purchased Professional and Technical Services</b>	<b>\$10,091.50</b>	<b>\$6,808.50</b>	<b>\$11,345.00</b>	<b>\$28,245.00</b>
<b>400 Purchased Property Services</b>				
430 Repairs and Maintenance Services	3,310.17	3,445.28		6,755.45
<b>Total Purchased Property Services</b>	<b>\$3,310.17</b>	<b>\$3,445.28</b>		<b>\$6,755.45</b>
<b>500 Other Purchased Services</b>				
580 Travel	2,472.29	3,481.31	18,624.44	24,578.04
<b>Total Other Purchased Services</b>	<b>\$2,472.29</b>	<b>\$3,481.31</b>	<b>\$18,624.44</b>	<b>\$24,578.04</b>
<b>600 Supplies</b>				
610 General Supplies	939.89	867.59		1,807.48
630 Food	925.91	854.68		1,780.59
640 Books and Periodicals	2,021.97	1,866.44		3,888.41
<b>Total Supplies</b>	<b>\$3,887.77</b>	<b>\$3,588.71</b>		<b>\$7,476.48</b>
<b>700 Property</b>				
750 Equipment – Original and Additional	571.65	527.67		1,099.32
<b>Total Property</b>	<b>\$571.65</b>	<b>\$527.67</b>		<b>\$1,099.32</b>
<b>800 Other Objects</b>				
810 Dues and Fees	180.94	167.04		347.98
<b>Total Other Objects</b>	<b>\$180.94</b>	<b>\$167.04</b>		<b>\$347.98</b>
<b>Total 2270 Instructional Staff Professional Development Services</b>	<b>\$467,999.77</b>	<b>\$484,306.32</b>	<b>\$43,888.17</b>	<b>\$996,194.26</b>

General Fund (10)

	<u>Elementary</u>	<u>Secondary</u>	<u>Federal</u>	<u>Total</u>
<b>2290 Other Instructional Staff Services</b>				
<b>100 Personnel Services – Salaries</b>				
100 Personnel Services – Salaries	467,349.39	494,274.86		961,624.25
<b>Total Personnel Services – Salaries</b>	<b>\$467,349.39</b>	<b>\$494,274.86</b>		<b>\$961,624.25</b>
<b>200 Personnel Services – Employee Benefits</b>				
220 Social Security Contributions	33,340.56	35,261.42		68,601.98
230 PSERS Retirement Contributions	117,282.23	124,039.24		241,321.47
250 Unemployment Compensation	111.95	118.40		230.35
260 Workers' Compensation	2,155.91	2,280.12		4,436.03
270 Group Insurance – Self-Insurance	57,035.08	60,321.05		117,356.13
290 Other Current Employee Benefits	3,924.97	4,151.09		8,076.06
<b>Total Personnel Services – Employee Benefits</b>	<b>\$213,850.70</b>	<b>\$226,171.32</b>		<b>\$440,022.02</b>
<b>Total 2290 Other Instructional Staff Services</b>	<b>\$681,200.09</b>	<b>\$720,446.18</b>		<b>\$1,401,646.27</b>

LEA : 122092102 Central Bucks SD

Printed 10/27/2016 10:23:58 AM

Page - 18 of 49

**General Fund (10)****2300 Support Services – Administration**

	<u>Elementary</u>	<u>Secondary</u>	<u>Federal</u>	<u>Total</u>
<b>100 Personnel Services – Salaries</b>				
100 Personnel Services – Salaries	3,210,898.15	3,520,751.44		8,245,474.92
<b>Total Personnel Services – Salaries</b>	<b>\$3,210,898.15</b>	<b>\$3,520,751.44</b>		<b>\$8,245,474.92</b>
<b>200 Personnel Services – Employee Benefits</b>				
220 Social Security Contributions	226,287.50	253,437.30		568,813.49
230 PSERS Retirement Contributions	827,993.38	927,832.09		2,065,468.90
240 Tuition Reimbursement	40,034.27	42,340.78		82,375.05
250 Unemployment Compensation	499.50	581.35		1,259.40
260 Workers' Compensation	15,800.46	16,601.13		38,501.64
270 Group Insurance – Self-Insurance	262,552.36	498,904.51		957,709.22
290 Other Current Employee Benefits	60,250.72	53,974.80		138,067.38
<b>Total Personnel Services – Employee Benefits</b>	<b>\$1,433,418.19</b>	<b>\$1,793,671.96</b>		<b>\$3,852,195.08</b>
<b>300 Purchased Professional and Technical Services</b>				
310 Official / Administrative Services				793,253.07
330 Other Professional Services		16,096.23		452,996.52
<b>Total Purchased Professional and Technical Services</b>		<b>\$16,096.23</b>		<b>\$1,246,249.59</b>
<b>400 Purchased Property Services</b>				
430 Repairs and Maintenance Services				2,383.83
440 Rentals				17,110.41
<b>Total Purchased Property Services</b>				<b>\$19,494.24</b>
<b>500 Other Purchased Services</b>				
520 Insurance – General				217,346.00
530 Communications	3,410.71	22,495.46		63,294.40
549 Other Advertising/Public Relations				12,492.24
550 Printing and Binding				9,582.00
580 Travel	258.64	8,412.15		10,575.88
<b>Total Other Purchased Services</b>	<b>\$3,669.35</b>	<b>\$30,907.61</b>		<b>\$313,290.52</b>
<b>600 Supplies</b>				
610 General Supplies	8,202.33	78,715.20		109,162.69
630 Food	201.25	4,463.37		7,782.64
640 Books and Periodicals		3,863.23		3,863.23
<b>Total Supplies</b>	<b>\$8,403.58</b>	<b>\$87,041.80</b>		<b>\$120,808.56</b>
<b>700 Property</b>				
750 Equipment – Original and Additional	3,814.40	14,392.97		23,196.17
760 Equipment – Replacement	4,523.10	66.30		4,589.40
<b>Total Property</b>	<b>\$8,337.50</b>	<b>\$14,459.27</b>		<b>\$27,785.57</b>
<b>800 Other Objects</b>				
810 Dues and Fees	9,266.51	10,789.02		39,337.23
<b>Total Other Objects</b>	<b>\$9,266.51</b>	<b>\$10,789.02</b>		<b>\$39,337.23</b>
<b>Total 2300 Support Services – Administration</b>	<b>\$4,673,993.28</b>	<b>\$5,473,717.33</b>		<b>\$13,864,635.71</b>

General Fund (10)

2310 Board Services

Elementary

Secondary

Federal

Total

500 Other Purchased Services

520 Insurance – General

217,346.00

549 Other Advertising/Public Relations

2,235.85

**Total Other Purchased Services**

**\$219,581.85**

800 Other Objects

810 Dues and Fees

15,715.00

**Total Other Objects**

**\$15,715.00**

**Total 2310 Board Services**

**\$235,296.85**

General Fund (10)

	<u>Elementary</u>	<u>Secondary</u>	<u>Federal</u>	<u>Total</u>
<b>2330 Tax Assessment and Collection Services</b>				
<b>100 Personnel Services – Salaries</b>				
100 Personnel Services – Salaries				165,578.00
<b>Total Personnel Services – Salaries</b>				<b>\$165,578.00</b>
<b>200 Personnel Services – Employee Benefits</b>				
220 Social Security Contributions				12,666.73
250 Unemployment Compensation				6.10
260 Workers’ Compensation				35.00
<b>Total Personnel Services – Employee Benefits</b>				<b>\$12,707.83</b>
<b>300 Purchased Professional and Technical Services</b>				
310 Official / Administrative Services				793,253.07
<b>Total Purchased Professional and Technical Services</b>				<b>\$793,253.07</b>
<b>500 Other Purchased Services</b>				
530 Communications				5,550.86
550 Printing and Binding				932.00
<b>Total Other Purchased Services</b>				<b>\$6,482.86</b>
<b>600 Supplies</b>				
610 General Supplies				945.50
<b>Total Supplies</b>				<b>\$945.50</b>
<b>Total 2330 Tax Assessment and Collection Services</b>				<b>\$978,967.26</b>



General Fund (10)

2340 Staff Relations and Negotiations Services

Elementary

Secondary

Federal

Total

100 Personnel Services – Salaries

100 Personnel Services – Salaries 479,539.29

**Total Personnel Services – Salaries \$479,539.29**

200 Personnel Services – Employee Benefits

220 Social Security Contributions 34,763.97

230 PSERS Retirement Contributions 121,677.56

250 Unemployment Compensation 22.95

260 Workers' Compensation 3,236.03

270 Group Insurance – Self-Insurance 101,152.02

290 Other Current Employee Benefits 4,410.34

**Total Personnel Services – Employee Benefits \$265,262.87**

300 Purchased Professional and Technical Services

330 Other Professional Services 165,075.79

**Total Purchased Professional and Technical Services \$165,075.79**

400 Purchased Property Services

430 Repairs and Maintenance Services 831.23

**Total Purchased Property Services \$831.23**

500 Other Purchased Services

549 Other Advertising/Public Relations 8,459.17

580 Travel 150.00

**Total Other Purchased Services \$8,609.17**

600 Supplies

610 General Supplies 10,813.57

**Total Supplies \$10,813.57**

800 Other Objects

810 Dues and Fees 946.70

**Total Other Objects \$946.70**

**Total 2340 Staff Relations and Negotiations Services \$931,078.62**

General Fund (10)

2350 Legal and Accounting Services

Elementary

Secondary

Federal

Total

300 Purchased Professional and Technical Services

330 Other Professional Services

219,352.50

**Total Purchased Professional and Technical Services**

**\$219,352.50**

**Total 2350 Legal and Accounting Services**

**\$219,352.50**

**General Fund (10)**

	<u>Elementary</u>	<u>Secondary</u>	<u>Federal</u>	<u>Total</u>
<b>2360 Office of the Superintendent / Executive Director Services</b>				
<b>100 Personnel Services – Salaries</b>				
100 Personnel Services – Salaries				835,505.46
<b>Total Personnel Services – Salaries</b>				<b>\$835,505.46</b>
<b>200 Personnel Services – Employee Benefits</b>				
220 Social Security Contributions				39,343.95
230 PSERS Retirement Contributions				179,412.26
250 Unemployment Compensation				134.75
260 Workers' Compensation				2,403.35
270 Group Insurance – Self-Insurance				80,503.08
290 Other Current Employee Benefits				19,431.52
<b>Total Personnel Services – Employee Benefits</b>				<b>\$321,228.91</b>
<b>500 Other Purchased Services</b>				
580 Travel				667.56
<b>Total Other Purchased Services</b>				<b>\$667.56</b>
<b>600 Supplies</b>				
630 Food				519.43
<b>Total Supplies</b>				<b>\$519.43</b>
<b>700 Property</b>				
750 Equipment – Original and Additional				1,297.50
<b>Total Property</b>				<b>\$1,297.50</b>
<b>800 Other Objects</b>				
810 Dues and Fees				40.00
<b>Total Other Objects</b>				<b>\$40.00</b>
<b>Total 2360 Office of the Superintendent / Executive Director Services</b>				<b>\$1,159,258.86</b>

General Fund (10)

2370 Community Relations Services

Elementary

Secondary

Federal

Total

100 Personnel Services – Salaries

100 Personnel Services – Salaries

33,202.58

**Total Personnel Services – Salaries**

**\$33,202.58**

200 Personnel Services – Employee Benefits

220 Social Security Contributions

2,314.04

230 PSERS Retirement Contributions

8,553.61

250 Unemployment Compensation

14.75

260 Workers' Compensation

425.67

270 Group Insurance – Self-Insurance

14,597.25

**Total Personnel Services – Employee Benefits**

**\$25,905.32**

400 Purchased Property Services

430 Repairs and Maintenance Services

1,552.60

**Total Purchased Property Services**

**\$1,552.60**

500 Other Purchased Services

550 Printing and Binding

8,650.00

580 Travel

411.81

**Total Other Purchased Services**

**\$9,061.81**

600 Supplies

610 General Supplies

922.46

**Total Supplies**

**\$922.46**

**Total 2370 Community Relations Services**

**\$70,644.77**

General Fund (10)

2380 Office of the Principal Services

100 Personnel Services – Salaries

	<u>Elementary</u>	<u>Secondary</u>	<u>Federal</u>	<u>Total</u>
100 Personnel Services – Salaries	3,210,898.15	3,520,751.44		6,731,649.59
<b>Total Personnel Services – Salaries</b>	<b>\$3,210,898.15</b>	<b>\$3,520,751.44</b>		<b>\$6,731,649.59</b>

200 Personnel Services – Employee Benefits

220 Social Security Contributions	226,287.50	253,437.30		479,724.80
230 PSERS Retirement Contributions	827,993.38	927,832.09		1,755,825.47
240 Tuition Reimbursement	40,034.27	42,340.78		82,375.05
250 Unemployment Compensation	499.50	581.35		1,080.85
260 Workers' Compensation	15,800.46	16,601.13		32,401.59
270 Group Insurance – Self-Insurance	262,552.36	498,904.51		761,456.87
290 Other Current Employee Benefits	60,250.72	53,974.80		114,225.52
<b>Total Personnel Services – Employee Benefits</b>	<b>\$1,433,418.19</b>	<b>\$1,793,671.96</b>		<b>\$3,227,090.15</b>

300 Purchased Professional and Technical Services

330 Other Professional Services		16,096.23		16,096.23
<b>Total Purchased Professional and Technical Services</b>		<b>\$16,096.23</b>		<b>\$16,096.23</b>

500 Other Purchased Services

530 Communications	3,410.71	22,495.46		25,906.17
580 Travel	258.64	8,412.15		8,670.79
<b>Total Other Purchased Services</b>	<b>\$3,669.35</b>	<b>\$30,907.61</b>		<b>\$34,576.96</b>

600 Supplies

610 General Supplies	8,202.33	78,715.20		86,917.53
630 Food	201.25	4,463.37		4,664.62
640 Books and Periodicals		3,863.23		3,863.23
<b>Total Supplies</b>	<b>\$8,403.58</b>	<b>\$87,041.80</b>		<b>\$95,445.38</b>

700 Property

750 Equipment – Original and Additional	3,814.40	14,392.97		18,207.37
760 Equipment – Replacement	4,523.10	66.30		4,589.40
<b>Total Property</b>	<b>\$8,337.50</b>	<b>\$14,459.27</b>		<b>\$22,796.77</b>

800 Other Objects

810 Dues and Fees	9,266.51	10,789.02		20,055.53
<b>Total Other Objects</b>	<b>\$9,266.51</b>	<b>\$10,789.02</b>		<b>\$20,055.53</b>
<b>Total 2380 Office of the Principal Services</b>	<b>\$4,673,993.28</b>	<b>\$5,473,717.33</b>		<b>\$10,147,710.61</b>

General Fund (10)

2390 Other Administration Services

Elementary

Secondary

Federal

Total

300 Purchased Professional and Technical Services

330 Other Professional Services

52,472.00

**Total Purchased Professional and Technical Services**

**\$52,472.00**

400 Purchased Property Services

440 Rentals

17,110.41

**Total Purchased Property Services**

**\$17,110.41**

500 Other Purchased Services

530 Communications

31,837.37

549 Other Advertising/Public Relations

1,797.22

580 Travel

675.72

**Total Other Purchased Services**

**\$34,310.31**

600 Supplies

610 General Supplies

9,563.63

630 Food

2,598.59

**Total Supplies**

**\$12,162.22**

700 Property

750 Equipment – Original and Additional

3,691.30

**Total Property**

**\$3,691.30**

800 Other Objects

810 Dues and Fees

2,580.00

**Total Other Objects**

**\$2,580.00**

**Total 2390 Other Administration Services**

**\$122,326.24**

**General Fund (10)**

**2400 Support Services – Pupil Health**

Elementary                      Secondary                      Federal                      Total

<b>100</b>	<b><u>Personnel Services – Salaries</u></b>			
	100 Personnel Services – Salaries			2,258,557.60
<b>Total Personnel Services – Salaries</b>				<b>\$2,258,557.60</b>
<b>200</b>	<b><u>Personnel Services – Employee Benefits</u></b>			
	220 Social Security Contributions			167,133.68
	230 PSERS Retirement Contributions			581,291.29
	250 Unemployment Compensation			735.50
	260 Workers' Compensation			22,651.18
	270 Group Insurance – Self-Insurance			404,257.87
	290 Other Current Employee Benefits			9,500.00
<b>Total Personnel Services – Employee Benefits</b>				<b>\$1,185,569.52</b>
<b>300</b>	<b><u>Purchased Professional and Technical Services</u></b>			
	329 Professional Educational Services – Other			500.00
	330 Other Professional Services			41,160.00
<b>Total Purchased Professional and Technical Services</b>				<b>\$41,660.00</b>
<b>500</b>	<b><u>Other Purchased Services</u></b>			
	580 Travel			977.82
<b>Total Other Purchased Services</b>				<b>\$977.82</b>
<b>600</b>	<b><u>Supplies</u></b>			
	610 General Supplies			47,483.69
<b>Total Supplies</b>				<b>\$47,483.69</b>
<b>700</b>	<b><u>Property</u></b>			
	750 Equipment – Original and Additional			2,287.88
	760 Equipment – Replacement			3,064.53
<b>Total Property</b>				<b>\$5,352.41</b>
<b>800</b>	<b><u>Other Objects</u></b>			
	810 Dues and Fees			60.00
<b>Total Other Objects</b>				<b>\$60.00</b>
<b>Total 2400 Support Services – Pupil Health</b>				<b>\$3,539,661.04</b>

**General Fund (10)**

**2440 Nursing Services**

	<u>Elementary</u>	<u>Secondary</u>	<u>Federal</u>	<u>Total</u>
<b>100 Personnel Services – Salaries</b>				
100 Personnel Services – Salaries				2,173,299.15
<b>Total Personnel Services – Salaries</b>				<b>\$2,173,299.15</b>
<b>200 Personnel Services – Employee Benefits</b>				
220 Social Security Contributions				160,786.20
230 PSERS Retirement Contributions				559,260.55
250 Unemployment Compensation				721.16
260 Workers' Compensation				22,240.30
270 Group Insurance – Self-Insurance				394,209.24
290 Other Current Employee Benefits				9,500.00
<b>Total Personnel Services – Employee Benefits</b>				<b>\$1,146,717.45</b>
<b>300 Purchased Professional and Technical Services</b>				
329 Professional Educational Services – Other				500.00
330 Other Professional Services				41,160.00
<b>Total Purchased Professional and Technical Services</b>				<b>\$41,660.00</b>
<b>500 Other Purchased Services</b>				
580 Travel				977.82
<b>Total Other Purchased Services</b>				<b>\$977.82</b>
<b>600 Supplies</b>				
610 General Supplies				47,483.69
<b>Total Supplies</b>				<b>\$47,483.69</b>
<b>700 Property</b>				
750 Equipment – Original and Additional				2,287.88
760 Equipment – Replacement				3,064.53
<b>Total Property</b>				<b>\$5,352.41</b>
<b>800 Other Objects</b>				
810 Dues and Fees				60.00
<b>Total Other Objects</b>				<b>\$60.00</b>
<b>Total 2440 Nursing Services</b>				<b>\$3,415,550.52</b>



General Fund (10)

2450 Nonpublic Health Services

Elementary

Secondary

Federal

Total

100 Personnel Services – Salaries

100 Personnel Services – Salaries

85,258.45

**Total Personnel Services – Salaries**

**\$85,258.45**

200 Personnel Services – Employee Benefits

220 Social Security Contributions

6,347.48

230 PSERS Retirement Contributions

22,030.74

250 Unemployment Compensation

14.34

260 Workers' Compensation

410.88

270 Group Insurance – Self-Insurance

10,048.63

**Total Personnel Services – Employee Benefits**

**\$38,852.07**

**Total 2450 Nonpublic Health Services**

**\$124,110.52**

General Fund (10)

2500 Support Services – Business

Elementary

Secondary

Federal

Total

100 Personnel Services – Salaries

100 Personnel Services – Salaries

936,741.93

**Total Personnel Services – Salaries**

**\$936,741.93**

200 Personnel Services – Employee Benefits

220 Social Security Contributions

66,057.54

230 PSERS Retirement Contributions

240,975.08

250 Unemployment Compensation

191.75

260 Workers' Compensation

5,543.71

270 Group Insurance – Self-Insurance

126,822.00

290 Other Current Employee Benefits

11,059.68

**Total Personnel Services – Employee Benefits**

**\$450,649.76**

300 Purchased Professional and Technical Services

330 Other Professional Services

21,298.55

**Total Purchased Professional and Technical Services**

**\$21,298.55**

400 Purchased Property Services

430 Repairs and Maintenance Services

4,507.61

**Total Purchased Property Services**

**\$4,507.61**

500 Other Purchased Services

549 Other Advertising/Public Relations

11,344.78

580 Travel

2,504.31

**Total Other Purchased Services**

**\$13,849.09**

600 Supplies

610 General Supplies

11,555.41

630 Food

553.13

**Total Supplies**

**\$12,108.54**

700 Property

750 Equipment – Original and Additional

563.52

**Total Property**

**\$563.52**

800 Other Objects

810 Dues and Fees

3,178.79

**Total Other Objects**

**\$3,178.79**

**Total 2500 Support Services – Business**

**\$1,442,897.79**

General Fund (10)

2510 Fiscal Services

Elementary

Secondary

Federal

Total

100 Personnel Services – Salaries

100 Personnel Services – Salaries

936,741.93

**Total Personnel Services – Salaries**

**\$936,741.93**

200 Personnel Services – Employee Benefits

220 Social Security Contributions

66,057.54

230 PSERS Retirement Contributions

240,975.08

250 Unemployment Compensation

191.75

260 Workers' Compensation

5,543.71

270 Group Insurance – Self-Insurance

126,822.00

290 Other Current Employee Benefits

11,059.68

**Total Personnel Services – Employee Benefits**

**\$450,649.76**

300 Purchased Professional and Technical Services

330 Other Professional Services

21,298.55

**Total Purchased Professional and Technical Services**

**\$21,298.55**

400 Purchased Property Services

430 Repairs and Maintenance Services

4,507.61

**Total Purchased Property Services**

**\$4,507.61**

500 Other Purchased Services

549 Other Advertising/Public Relations

11,344.78

580 Travel

2,504.31

**Total Other Purchased Services**

**\$13,849.09**

600 Supplies

610 General Supplies

11,555.41

630 Food

553.13

**Total Supplies**

**\$12,108.54**

700 Property

750 Equipment – Original and Additional

563.52

**Total Property**

**\$563.52**

800 Other Objects

810 Dues and Fees

3,178.79

**Total Other Objects**

**\$3,178.79**

**Total 2510 Fiscal Services**

**\$1,442,897.79**

General Fund (10)

2511 Supervision of Fiscal Services - Head of Component

Elementary

Secondary

Federal

Total

100 Personnel Services – Salaries

100 Personnel Services – Salaries

192,097.35

**Total Personnel Services – Salaries**

**\$192,097.35**

200 Personnel Services – Employee Benefits

220 Social Security Contributions

13,546.40

230 PSERS Retirement Contributions

49,416.68

250 Unemployment Compensation

39.32

260 Workers' Compensation

1,136.85

270 Group Insurance – Self-Insurance

26,007.34

290 Other Current Employee Benefits

2,268.00

**Total Personnel Services – Employee Benefits**

**\$92,414.59**

**Total 2511 Supervision of Fiscal Services - Head of Component**

**\$284,511.94**

General Fund (10)

2515 Financial Accounting Services

Elementary

Secondary

Federal

Total

100 Personnel Services – Salaries

100 Personnel Services – Salaries

744,644.58

**Total Personnel Services – Salaries**

**\$744,644.58**

200 Personnel Services – Employee Benefits

220 Social Security Contributions

52,511.14

230 PSERS Retirement Contributions

191,558.40

250 Unemployment Compensation

152.43

260 Workers' Compensation

4,406.86

270 Group Insurance – Self-Insurance

100,814.66

290 Other Current Employee Benefits

8,791.68

**Total Personnel Services – Employee Benefits**

**\$358,235.17**

300 Purchased Professional and Technical Services

330 Other Professional Services

21,298.55

**Total Purchased Professional and Technical Services**

**\$21,298.55**

400 Purchased Property Services

430 Repairs and Maintenance Services

4,507.61

**Total Purchased Property Services**

**\$4,507.61**

500 Other Purchased Services

549 Other Advertising/Public Relations

11,344.78

580 Travel

2,504.31

**Total Other Purchased Services**

**\$13,849.09**

600 Supplies

610 General Supplies

11,555.41

630 Food

553.13

**Total Supplies**

**\$12,108.54**

700 Property

750 Equipment – Original and Additional

563.52

**Total Property**

**\$563.52**

800 Other Objects

810 Dues and Fees

3,178.79

**Total Other Objects**

**\$3,178.79**

**Total 2515 Financial Accounting Services**

**\$1,158,385.85**

LEA : 122092102 Central Bucks SD

Printed 10/27/2016 10:23:58 AM

Page - 34 of 49

## General Fund (10)

## 2600 Operation and Maintenance of Plant Services

ElementarySecondaryFederalTotal**100 Personnel Services – Salaries**

100 Personnel Services – Salaries

9,443,781.89

**Total Personnel Services – Salaries****\$9,443,781.89****200 Personnel Services – Employee Benefits**

220 Social Security Contributions

743,166.14

230 PSERS Retirement Contributions

2,596,994.21

250 Unemployment Compensation

6,969.59

260 Workers' Compensation

92,344.50

270 Group Insurance – Self-Insurance

2,157,598.21

290 Other Current Employee Benefits

15,412.51

**Total Personnel Services – Employee Benefits****\$5,612,485.16****400 Purchased Property Services**

410 Cleaning Services

612,702.01

420 Utility Services

2,315,558.59

430 Repairs and Maintenance Services

843,805.47

440 Rentals

53,006.03

460 Extermination Services

24,000.00

490 Other Purchased Property Services

398,500.59

**Total Purchased Property Services****\$4,247,572.69****500 Other Purchased Services**

521 Fire Insurance

348,482.00

523 General Property and Liability Insurance

228,388.00

529 Other Insurance

15,171.00

550 Printing and Binding

753.19

580 Travel

11,264.01

**Total Other Purchased Services****\$604,058.20****600 Supplies**

610 General Supplies

896,015.95

947,638.28

1,843,654.23

620 Energy

822,790.55

**Total Supplies****\$896,015.95****\$947,638.28****\$2,666,444.78****700 Property**

750 Equipment – Original and Additional

18,986.23

760 Equipment – Replacement

67,998.08

**Total Property****\$86,984.31****800 Other Objects**

810 Dues and Fees

3,704.00

**Total Other Objects****\$3,704.00****Total 2600 Operation and Maintenance of Plant Services****\$896,015.95****\$947,638.28****\$22,665,031.03**

General Fund (10)

2610 Supervision of Operation and Maintenance of Plant Services

Elementary

Secondary

Federal

Total

100 Personnel Services – Salaries

100 Personnel Services – Salaries

163,834.00

**Total Personnel Services – Salaries**

**\$163,834.00**

200 Personnel Services – Employee Benefits

220 Social Security Contributions

12,892.70

230 PSERS Retirement Contributions

45,053.56

250 Unemployment Compensation

120.91

260 Workers' Compensation

1,602.02

270 Group Insurance – Self-Insurance

37,430.76

290 Other Current Employee Benefits

267.39

**Total Personnel Services – Employee Benefits**

**\$97,367.34**

**Total 2610 Supervision of Operation and Maintenance of Plant Services**

**\$261,201.34**

General Fund (10)

2611 Supervision of Operation and Maintenance of Plant Services – Head of Component

Elementary

Secondary

Federal

Total

100 Personnel Services – Salaries

100 Personnel Services – Salaries

163,834.00

**Total Personnel Services – Salaries**

**\$163,834.00**

200 Personnel Services – Employee Benefits

220 Social Security Contributions

12,892.70

230 PSERS Retirement Contributions

45,053.56

250 Unemployment Compensation

120.91

260 Workers' Compensation

1,602.02

270 Group Insurance – Self-Insurance

37,430.76

290 Other Current Employee Benefits

267.39

**Total Personnel Services – Employee Benefits**

**\$97,367.34**

**Total 2611 Supervision of Operation and Maintenance of Plant Services – Head of Component**

**\$261,201.34**



General Fund (10)

2620 Operation of Buildings Services

Elementary

Secondary

Federal

Total

100 Personnel Services – Salaries

100 Personnel Services – Salaries

9,279,947.89

**Total Personnel Services – Salaries**

**\$9,279,947.89**

200 Personnel Services – Employee Benefits

220 Social Security Contributions

730,273.44

230 PSERS Retirement Contributions

2,551,940.65

250 Unemployment Compensation

6,848.68

260 Workers' Compensation

90,742.48

270 Group Insurance – Self-Insurance

2,120,167.45

290 Other Current Employee Benefits

15,145.12

**Total Personnel Services – Employee Benefits**

**\$5,515,117.82**

400 Purchased Property Services

410 Cleaning Services

612,702.01

420 Utility Services

2,315,558.59

430 Repairs and Maintenance Services

843,805.47

440 Rentals

53,006.03

460 Extermination Services

24,000.00

490 Other Purchased Property Services

398,500.59

**Total Purchased Property Services**

**\$4,247,572.69**

500 Other Purchased Services

521 Fire Insurance

348,482.00

523 General Property and Liability Insurance

228,388.00

529 Other Insurance

15,171.00

550 Printing and Binding

753.19

580 Travel

11,264.01

**Total Other Purchased Services**

**\$604,058.20**

600 Supplies

610 General Supplies

896,015.95

947,638.28

1,843,654.23

620 Energy

822,790.55

**Total Supplies**

**\$896,015.95**

**\$947,638.28**

**\$2,666,444.78**

700 Property

750 Equipment – Original and Additional

18,986.23

760 Equipment – Replacement

67,998.08

**Total Property**

**\$86,984.31**

800 Other Objects

810 Dues and Fees

3,704.00

**Total Other Objects**

**\$3,704.00**

**Total 2620 Operation of Buildings Services**

**\$896,015.95**

**\$947,638.28**

**\$22,403,829.69**

General Fund (10)

	<u>Elementary</u>	<u>Secondary</u>	<u>Federal</u>	<u>Total</u>
<b>2700 Student Transportation Services</b>				
<b>100 Personnel Services – Salaries</b>				
100 Personnel Services – Salaries				5,099,234.39
<b>Total Personnel Services – Salaries</b>				<b>\$5,099,234.39</b>
<b>200 Personnel Services – Employee Benefits</b>				
220 Social Security Contributions				371,907.19
230 PSERS Retirement Contributions				1,271,258.49
250 Unemployment Compensation				2,410.10
260 Workers' Compensation				80,204.97
270 Group Insurance – Self-Insurance				1,283,247.27
290 Other Current Employee Benefits				2,015.63
<b>Total Personnel Services – Employee Benefits</b>				<b>\$3,011,043.65</b>
<b>300 Purchased Professional and Technical Services</b>				
330 Other Professional Services				2,692.00
<b>Total Purchased Professional and Technical Services</b>				<b>\$2,692.00</b>
<b>400 Purchased Property Services</b>				
410 Cleaning Services				6,541.44
420 Utility Services				17,582.69
430 Repairs and Maintenance Services				53,390.78
440 Rentals				6,292.18
<b>Total Purchased Property Services</b>				<b>\$83,807.09</b>
<b>500 Other Purchased Services</b>				
511 Student Transportation Services from Another LEA Within the State				172,607.76
513 Contracted Carriers				8,519,367.54
516 Student Transportation Services From the IU				342,672.77
522 Automotive Liability Insurance				183,160.00
530 Communications				21,665.52
580 Travel				8,100.94
<b>Total Other Purchased Services</b>				<b>\$9,247,574.53</b>
<b>600 Supplies</b>				
610 General Supplies				288,066.24
620 Energy				400,043.21
<b>Total Supplies</b>				<b>\$688,109.45</b>
<b>800 Other Objects</b>				
810 Dues and Fees				460.00
<b>Total Other Objects</b>				<b>\$460.00</b>
<b>Total 2700 Student Transportation Services</b>				<b>\$18,132,921.11</b>

General Fund (10)

2710 Supervision of Student Transportation Services

Elementary

Secondary

Federal

Total

100 Personnel Services – Salaries

100 Personnel Services – Salaries

198,470.64

**Total Personnel Services – Salaries**

**\$198,470.64**

200 Personnel Services – Employee Benefits

220 Social Security Contributions

14,475.24

230 PSERS Retirement Contributions

49,479.48

250 Unemployment Compensation

93.81

260 Workers' Compensation

3,121.71

270 Group Insurance – Self-Insurance

49,946.11

290 Other Current Employee Benefits

78.45

**Total Personnel Services – Employee Benefits**

**\$117,194.80**

**Total 2710 Supervision of Student Transportation Services**

**\$315,665.44**

General Fund (10)

2711 Supervision of Student Transportation Services – Head of Component

Elementary

Secondary

Federal

Total

100 Personnel Services – Salaries

100 Personnel Services – Salaries

198,470.64

**Total Personnel Services – Salaries**

**\$198,470.64**

200 Personnel Services – Employee Benefits

220 Social Security Contributions

14,475.24

230 PSERS Retirement Contributions

49,479.48

250 Unemployment Compensation

93.81

260 Workers' Compensation

3,121.71

270 Group Insurance – Self-Insurance

49,946.11

290 Other Current Employee Benefits

78.45

**Total Personnel Services – Employee Benefits**

**\$117,194.80**

**Total 2711 Supervision of Student Transportation Services – Head of Component**

**\$315,665.44**

General Fund (10)

2720 Vehicle Operation Services

Elementary

Secondary

Federal

Total

100 Personnel Services – Salaries

100 Personnel Services – Salaries

4,390,840.31

**Total Personnel Services – Salaries**

**\$4,390,840.31**

200 Personnel Services – Employee Benefits

220 Social Security Contributions

320,241.23

230 PSERS Retirement Contributions

1,094,653.16

250 Unemployment Compensation

2,075.28

260 Workers' Compensation

69,062.76

270 Group Insurance – Self-Insurance

1,104,976.43

290 Other Current Employee Benefits

1,735.62

**Total Personnel Services – Employee Benefits**

**\$2,592,744.48**

300 Purchased Professional and Technical Services

330 Other Professional Services

2,422.80

**Total Purchased Professional and Technical Services**

**\$2,422.80**

400 Purchased Property Services

410 Cleaning Services

5,887.30

420 Utility Services

15,824.42

430 Repairs and Maintenance Services

48,051.70

440 Rentals

5,662.96

**Total Purchased Property Services**

**\$75,426.38**

500 Other Purchased Services

511 Student Transportation Services from Another LEA Within the State

155,346.98

513 Contracted Carriers

7,667,430.79

516 Student Transportation Services From the IU

308,405.49

522 Automotive Liability Insurance

164,844.00

530 Communications

19,498.97

580 Travel

7,290.85

**Total Other Purchased Services**

**\$8,322,817.08**

600 Supplies

610 General Supplies

259,259.62

620 Energy

360,038.89

**Total Supplies**

**\$619,298.51**

800 Other Objects

810 Dues and Fees

414.00

**Total Other Objects**

**\$414.00**

**Total 2720 Vehicle Operation Services**

**\$16,003,963.56**

General Fund (10)

2750 Nonpublic Transportation

Elementary                      Secondary                      Federal                      Total

<b>100 Personnel Services – Salaries</b>				
100 Personnel Services – Salaries				509,923.44
<b>Total Personnel Services – Salaries</b>				<b>\$509,923.44</b>
<b>200 Personnel Services – Employee Benefits</b>				
220 Social Security Contributions				37,190.72
230 PSERS Retirement Contributions				127,125.85
250 Unemployment Compensation				241.01
260 Workers' Compensation				8,020.50
270 Group Insurance – Self-Insurance				128,324.73
290 Other Current Employee Benefits				201.56
<b>Total Personnel Services – Employee Benefits</b>				<b>\$301,104.37</b>
<b>300 Purchased Professional and Technical Services</b>				
330 Other Professional Services				269.20
<b>Total Purchased Professional and Technical Services</b>				<b>\$269.20</b>
<b>400 Purchased Property Services</b>				
410 Cleaning Services				654.14
420 Utility Services				1,758.27
430 Repairs and Maintenance Services				5,339.08
440 Rentals				629.22
<b>Total Purchased Property Services</b>				<b>\$8,380.71</b>
<b>500 Other Purchased Services</b>				
511 Student Transportation Services from Another LEA Within the State				17,260.78
513 Contracted Carriers				851,936.75
516 Student Transportation Services From the IU				34,267.28
522 Automotive Liability Insurance				18,316.00
530 Communications				2,166.55
580 Travel				810.09
<b>Total Other Purchased Services</b>				<b>\$924,757.45</b>
<b>600 Supplies</b>				
610 General Supplies				28,806.62
620 Energy				40,004.32
<b>Total Supplies</b>				<b>\$68,810.94</b>
<b>800 Other Objects</b>				
810 Dues and Fees				46.00
<b>Total Other Objects</b>				<b>\$46.00</b>
<b>Total 2750 Nonpublic Transportation</b>				<b>\$1,813,292.11</b>

**General Fund (10)**

**2800 Support Services – Central**

	<u>Elementary</u>	<u>Secondary</u>	<u>Federal</u>	<u>Total</u>
<b>100 Personnel Services – Salaries</b>				
100 Personnel Services – Salaries			23,162.79	830,557.85
<b>Total Personnel Services – Salaries</b>			<b>\$23,162.79</b>	<b>\$830,557.85</b>
<b>200 Personnel Services – Employee Benefits</b>				
220 Social Security Contributions			1,503.02	59,124.16
230 PSERS Retirement Contributions			5,983.92	200,138.57
250 Unemployment Compensation			4.43	198.18
260 Workers' Compensation			127.70	4,293.73
270 Group Insurance – Self-Insurance			4,379.39	112,752.51
290 Other Current Employee Benefits			325.91	6,921.85
<b>Total Personnel Services – Employee Benefits</b>			<b>\$12,324.37</b>	<b>\$383,429.00</b>
<b>300 Purchased Professional and Technical Services</b>				
340 Technical Services				132,050.04
350 Security / Safety Services				50,277.06
<b>Total Purchased Professional and Technical Services</b>				<b>\$182,327.10</b>
<b>400 Purchased Property Services</b>				
430 Repairs and Maintenance Services				570,848.97
<b>Total Purchased Property Services</b>				<b>\$570,848.97</b>
<b>500 Other Purchased Services</b>				
530 Communications				415,766.72
580 Travel				11,087.63
<b>Total Other Purchased Services</b>				<b>\$426,854.35</b>
<b>600 Supplies</b>				
610 General Supplies				65,649.55
<b>Total Supplies</b>				<b>\$65,649.55</b>
<b>700 Property</b>				
750 Equipment – Original and Additional				40,698.75
<b>Total Property</b>				<b>\$40,698.75</b>
<b>Total 2800 Support Services – Central</b>			<b>\$35,487.16</b>	<b>\$2,500,365.57</b>

General Fund (10)

2810 Planning, Research, Development and Evaluation Services

Elementary

Secondary

Federal

Total

100 Personnel Services – Salaries

100 Personnel Services – Salaries

628,112.64

**Total Personnel Services – Salaries**

**\$628,112.64**

200 Personnel Services – Employee Benefits

220 Social Security Contributions

44,858.73

230 PSERS Retirement Contributions

150,953.17

250 Unemployment Compensation

150.97

260 Workers' Compensation

3,239.19

270 Group Insurance – Self-Insurance

84,034.61

290 Other Current Employee Benefits

5,101.80

**Total Personnel Services – Employee Benefits**

**\$288,338.47**

300 Purchased Professional and Technical Services

340 Technical Services

132,050.04

350 Security / Safety Services

50,277.06

**Total Purchased Professional and Technical Services**

**\$182,327.10**

400 Purchased Property Services

430 Repairs and Maintenance Services

570,848.97

**Total Purchased Property Services**

**\$570,848.97**

500 Other Purchased Services

530 Communications

415,766.72

580 Travel

11,087.63

**Total Other Purchased Services**

**\$426,854.35**

600 Supplies

610 General Supplies

65,649.55

**Total Supplies**

**\$65,649.55**

700 Property

750 Equipment – Original and Additional

40,698.75

**Total Property**

**\$40,698.75**

**Total 2810 Planning, Research, Development and Evaluation Services**

**\$2,202,829.83**



General Fund (10)

2820 Information Services

Elementary

Secondary

Federal

Total

100 Personnel Services – Salaries

100 Personnel Services – Salaries

179,282.42

**Total Personnel Services – Salaries**

**\$179,282.42**

200 Personnel Services – Employee Benefits

220 Social Security Contributions

12,762.41

230 PSERS Retirement Contributions

43,201.48

250 Unemployment Compensation

42.78

260 Workers' Compensation

926.84

270 Group Insurance – Self-Insurance

24,338.51

290 Other Current Employee Benefits

1,494.14

**Total Personnel Services – Employee Benefits**

**\$82,766.16**

**Total 2820 Information Services**

**\$262,048.58**

General Fund (10)

2821 Supervision of Information Services	<u>Elementary</u>	<u>Secondary</u>	<u>Federal</u>	<u>Total</u>
<b>100 Personnel Services – Salaries</b>				
100 Personnel Services – Salaries				179,282.42
<b>Total Personnel Services – Salaries</b>				<b>\$179,282.42</b>
<b>200 Personnel Services – Employee Benefits</b>				
220 Social Security Contributions				12,762.41
230 PSERS Retirement Contributions				43,201.48
250 Unemployment Compensation				42.78
260 Workers' Compensation				926.84
270 Group Insurance – Self-Insurance				24,338.51
290 Other Current Employee Benefits				1,494.14
<b>Total Personnel Services – Employee Benefits</b>				<b>\$82,766.16</b>
<b>Total 2821 Supervision of Information Services</b>				<b>\$262,048.58</b>

General Fund (10)

2850 State and Federal Agency Liaison Services

Elementary

Secondary

Federal

Total

**100 Personnel Services – Salaries**

100 Personnel Services – Salaries

23,162.79

23,162.79

**Total Personnel Services – Salaries**

**\$23,162.79**

**\$23,162.79**

**200 Personnel Services – Employee Benefits**

220 Social Security Contributions

1,503.02

1,503.02

230 PSERS Retirement Contributions

5,983.92

5,983.92

250 Unemployment Compensation

4.43

4.43

260 Workers' Compensation

127.70

127.70

270 Group Insurance – Self-Insurance

4,379.39

4,379.39

290 Other Current Employee Benefits

325.91

325.91

**Total Personnel Services – Employee Benefits**

**\$12,324.37**

**\$12,324.37**

**Total 2850 State and Federal Agency Liaison Services**

**\$35,487.16**

**\$35,487.16**

General Fund (10)

2900 Other Support Services

Elementary

Secondary

Federal

Total

500 Other Purchased Services

595 IU Payments By Withholding

148,273.60

596 Direct Payments To Intermediate Units

89,539.00

**Total Other Purchased Services**

**\$237,812.60**

**Total 2900 Other Support Services**

**\$237,812.60**

LEA : 122092102 Central Bucks SD

Printed 10/27/2016 10:23:58 AM

General Fund (10)

2910 Support Services Not Listed Elsewhere In the 2000 Series

Elementary

Secondary

Federal

Total

500 Other Purchased Services

595 IU Payments By Withholding

148,273.60

596 Direct Payments To Intermediate Units

89,539.00

**Total Other Purchased Services**

**\$237,812.60**

**Total 2910 Support Services Not Listed Elsewhere In the 2000 Series**

**\$237,812.60**

**General Fund (10)**

<b>3000 Operation of Non-Instructional Services</b>	<b><u>Total</u></b>
<b>100 Personnel Services – Salaries</b>	
100 Personnel Services – Salaries	3,744,491.32
<b>Total Personnel Services – Salaries</b>	<b>\$3,744,491.32</b>
<b>200 Personnel Services – Employee Benefits</b>	
220 Social Security Contributions	281,826.95
230 PSERS Retirement Contributions	874,647.40
250 Unemployment Compensation	1,676.10
260 Workers’ Compensation	77,052.66
270 Group Insurance – Self-Insurance	125,314.88
290 Other Current Employee Benefits	2,890.14
<b>Total Personnel Services – Employee Benefits</b>	<b>\$1,363,408.13</b>
<b>300 Purchased Professional and Technical Services</b>	
329 Professional Educational Services – Other	60,955.80
330 Other Professional Services	573,590.13
<b>Total Purchased Professional and Technical Services</b>	<b>\$634,545.93</b>
<b>400 Purchased Property Services</b>	
430 Repairs and Maintenance Services	4,096.11
<b>Total Purchased Property Services</b>	<b>\$4,096.11</b>
<b>500 Other Purchased Services</b>	
549 Other Advertising/Public Relations	430.00
580 Travel	45,316.63
<b>Total Other Purchased Services</b>	<b>\$45,746.63</b>
<b>600 Supplies</b>	
610 General Supplies	541,861.02
620 Energy	32,631.65
630 Food	50,739.20
<b>Total Supplies</b>	<b>\$625,231.87</b>
<b>700 Property</b>	
750 Equipment – Original and Additional	11,767.86
760 Equipment – Replacement	39,079.97
<b>Total Property</b>	<b>\$50,847.83</b>
<b>Total 3000 Operation of Non-Instructional Services</b>	<b>\$6,468,367.82</b>

**General Fund (10)**

**3200 Student Activities**

	<u>Elementary</u>	<u>Secondary</u>	<u>Federal</u>	<u>Total</u>
<b>100 Personnel Services – Salaries</b>				
100 Personnel Services – Salaries				1,686,526.53
<b>Total Personnel Services – Salaries</b>				<b>\$1,686,526.53</b>
<b>200 Personnel Services – Employee Benefits</b>				
220 Social Security Contributions				126,897.96
230 PSERS Retirement Contributions				414,421.55
250 Unemployment Compensation				567.50
260 Workers' Compensation				11,611.08
270 Group Insurance – Self-Insurance				52,986.25
290 Other Current Employee Benefits				2,060.20
<b>Total Personnel Services – Employee Benefits</b>				<b>\$608,544.54</b>
<b>300 Purchased Professional and Technical Services</b>				
330 Other Professional Services				559,503.13
<b>Total Purchased Professional and Technical Services</b>				<b>\$559,503.13</b>
<b>500 Other Purchased Services</b>				
580 Travel				13,238.14
<b>Total Other Purchased Services</b>				<b>\$13,238.14</b>
<b>600 Supplies</b>				
610 General Supplies				317,478.83
620 Energy				32,631.65
<b>Total Supplies</b>				<b>\$350,110.48</b>
<b>700 Property</b>				
750 Equipment – Original and Additional				6,199.98
760 Equipment – Replacement				39,079.97
<b>Total Property</b>				<b>\$45,279.95</b>
<b>Total 3200 Student Activities</b>				<b>\$3,263,202.77</b>

**General Fund (10)**

**3300 Community Services**

Elementary                      Secondary                      Federal                      Total

<b>100</b>	<b><u>Personnel Services – Salaries</u></b>			
	100 Personnel Services – Salaries			2,057,964.79
<b>Total Personnel Services – Salaries</b>				<b>\$2,057,964.79</b>
<b>200</b>	<b><u>Personnel Services – Employee Benefits</u></b>			
	220 Social Security Contributions			154,928.99
	230 PSERS Retirement Contributions			460,225.85
	250 Unemployment Compensation			1,108.60
	260 Workers' Compensation			65,441.58
	270 Group Insurance – Self-Insurance			72,328.63
	290 Other Current Employee Benefits			829.94
<b>Total Personnel Services – Employee Benefits</b>				<b>\$754,863.59</b>
<b>300</b>	<b><u>Purchased Professional and Technical Services</u></b>			
	329 Professional Educational Services – Other			60,955.80
	330 Other Professional Services			14,087.00
<b>Total Purchased Professional and Technical Services</b>				<b>\$75,042.80</b>
<b>400</b>	<b><u>Purchased Property Services</u></b>			
	430 Repairs and Maintenance Services			4,096.11
<b>Total Purchased Property Services</b>				<b>\$4,096.11</b>
<b>500</b>	<b><u>Other Purchased Services</u></b>			
	549 Other Advertising/Public Relations			430.00
	580 Travel			32,078.49
<b>Total Other Purchased Services</b>				<b>\$32,508.49</b>
<b>600</b>	<b><u>Supplies</u></b>			
	610 General Supplies		3,807.13	224,382.19
	630 Food		535.00	50,739.20
<b>Total Supplies</b>				<b>\$4,342.13</b> <b>\$275,121.39</b>
<b>700</b>	<b><u>Property</u></b>			
	750 Equipment – Original and Additional			5,567.88
<b>Total Property</b>				<b>\$5,567.88</b>
<b>Total 3300 Community Services</b>				<b>\$4,342.13</b> <b>\$3,205,165.05</b>



**General Fund (10)**

**5000 Other Expenditures and Financing Uses**

**Total**

**800 Other Objects**

830 Interest 4,695,143.73

**Total Other Objects \$4,695,143.73**

**900 Other Uses of Funds**

910 Redemption of Principal 14,865,000.00

930 Fund Transfers 10,500,000.00

939 Other Fund Transfers 16,299,665.00

**Total Other Uses of Funds \$41,664,665.00**

**Total 5000 Other Expenditures and Financing Uses \$46,359,808.73**

General Fund (10)

	<u>Elementary</u>	<u>Secondary</u>	<u>Federal</u>	<u>Total</u>
<b>5100 Debt Service / Other Expenditures and Financing Uses</b>				
<b>800 Other Objects</b>				
830 Interest				4,695,143.73
<b>Total Other Objects</b>				<b>\$4,695,143.73</b>
<b>900 Other Uses of Funds</b>				
910 Redemption of Principal				14,865,000.00
<b>Total Other Uses of Funds</b>				<b>\$14,865,000.00</b>
<b>Total 5100 Debt Service / Other Expenditures and Financing Uses</b>				<b>\$19,560,143.73</b>

General Fund (10)

	<u>Elementary</u>	<u>Secondary</u>	<u>Federal</u>	<u>Total</u>
<b>5110 Debt Service</b>				
<b>800 Other Objects</b>				
830 Interest				4,695,143.73
<b>Total Other Objects</b>				<b>\$4,695,143.73</b>
<b>900 Other Uses of Funds</b>				
910 Redemption of Principal				14,865,000.00
<b>Total Other Uses of Funds</b>				<b>\$14,865,000.00</b>
<b>Total 5110 Debt Service</b>				<b>\$19,560,143.73</b>

General Fund (10)

	<u>Elementary</u>	<u>Secondary</u>	<u>Federal</u>	<u>Total</u>
<b>5200 Interfund Transfers – Out</b>				
<b>900 Other Uses of Funds</b>				
930 Fund Transfers				10,500,000.00
939 Other Fund Transfers				16,299,665.00
<b>Total Other Uses of Funds</b>				<b>\$26,799,665.00</b>
<b>Total 5200 Interfund Transfers – Out</b>				<b>\$26,799,665.00</b>

General Fund (10)

5230 Capital Projects Fund Transfers

Elementary

Secondary

Federal

Total

900 Other Uses of Funds

939 Other Fund Transfers

16,299,665.00

**Total Other Uses of Funds**

**\$16,299,665.00**

**Total 5230 Capital Projects Fund Transfers**

**\$16,299,665.00**

General Fund (10)

5240 Debt Service Fund Transfers

Elementary

Secondary

Federal

Total

900 Other Uses of Funds

930 Fund Transfers

10,500,000.00

**Total Other Uses of Funds**

**\$10,500,000.00**

**Total 5240 Debt Service Fund Transfers**

**\$10,500,000.00**

Other Capital Projects Fund (39)

2000 Support Services

700 Property

750 Equipment – Original and Additional

4,733,091.00

760 Equipment – Replacement

1,453,912.00

**Total Property \$6,187,003.00**

**Total 2000 Support Services \$6,187,003.00**

LEA : 122092102 Central Bucks SD

Printed 10/27/2016 10:24:01 AM

Other Capital Projects Fund (39)

2200 Support Services – Instructional Staff

Elementary

Secondary

Federal

Total

700 Property

750 Equipment – Original and Additional

4,733,091.00

4,733,091.00

**Total Property**

**\$4,733,091.00**

**\$4,733,091.00**

**Total 2200 Support Services – Instructional Staff**

**\$4,733,091.00**

**\$4,733,091.00**



Other Capital Projects Fund (39)

2240 Computer-Assisted Instruction Support Services

Elementary

Secondary

Federal

Total

700 Property

750 Equipment – Original and Additional

4,733,091.00

4,733,091.00

**Total Property**

**\$4,733,091.00**

**\$4,733,091.00**

**Total 2240 Computer-Assisted Instruction Support Services**

**\$4,733,091.00**

**\$4,733,091.00**

LEA : 122092102 Central Bucks SD

Printed 10/27/2016 10:24:01 AM

Other Capital Projects Fund (39)

2700 Student Transportation Services

Elementary

Secondary

Federal

Total

700 Property

760 Equipment – Replacement

1,453,912.00

**Total Property**

**\$1,453,912.00**

**Total 2700 Student Transportation Services**

**\$1,453,912.00**

LEA : 122092102 Central Bucks SD

Printed 10/27/2016 10:24:01 AM

Other Capital Projects Fund (39)

2720 Vehicle Operation Services

Elementary

Secondary

Federal

Total

700 Property

760 Equipment – Replacement

1,453,912.00

**Total Property**

**\$1,453,912.00**

**Total 2720 Vehicle Operation Services**

**\$1,453,912.00**

**Other Capital Projects Fund (39)**

**4000 Facilities Acquisition, Construction and Improvement Services**

**Total**

**400 Purchased Property Services**

450 Construction Services

13,780,704.00

**Total Purchased Property Services**

**\$13,780,704.00**

**Total 4000 Facilities Acquisition, Construction and Improvement Services**

**\$13,780,704.00**

Other Capital Projects Fund (39)

4500 Building Acquisition and Construction Services – Original and Additional

Elementary

Secondary

Federal

Total

400 Purchased Property Services

450 Construction Services

5,357,640.00

**Total Purchased Property Services**

**\$5,357,640.00**

**Total 4500 Building Acquisition and Construction Services – Original and Additional**

**\$5,357,640.00**

LEA : 122092102 Central Bucks SD

Printed 10/27/2016 10:24:03 AM

Other Capital Projects Fund (39)

4600 Existing Building Improvement Services

Elementary

Secondary

Federal

Total

400 Purchased Property Services

450 Construction Services

8,423,064.00

**Total Purchased Property Services**

**\$8,423,064.00**

**Total 4600 Existing Building Improvement Services**

**\$8,423,064.00**

	<u>General Fund(10)</u>	<u>Public Purpose Trust(27)</u>	<u>Other Compt Approved (28)</u>	<u>Athletic / Activity(29)</u>	<u>Capital Reserve (690, 1850)(31)</u>
<b>1000 Instruction</b>					
1100 Regular Programs - Elementary / Secondary	123,831,376.22				
1200 Special Programs - Elementary / Secondary	37,518,075.03				
1300 Vocational Education	4,324,342.73				
1400 Other Instructional Programs - Elementary / Secondary	2,681,629.49				
1500 Nonpublic School Programs	10,069.00				
<b>Total Instruction</b>	<b>\$168,365,492.47</b>				
<b>2000 Support Services</b>					
2100 Support Services - Students	12,470,312.24				
2200 Support Services - Instructional Staff	10,031,463.42				
2300 Support Services - Administration	13,864,635.71				
2400 Support Services - Pupil Health	3,539,661.04				
2500 Support Services - Business	1,442,897.79				
2600 Operation and Maintenance of Plant Services	22,665,031.03				
2700 Student Transportation Services	18,132,921.11				
2800 Support Services - Central	2,500,365.57				
2900 Other Support Services	237,812.60				
<b>Total Support Services</b>	<b>\$84,885,100.51</b>				
<b>3000 Operation of Non-Instructional Services</b>					
3200 Student Activities	3,263,202.77				
3300 Community Services	3,205,165.05				
<b>Total Operation of Non-Instructional Services</b>	<b>\$6,468,367.82</b>				
<b>4000 Facilities Acquisition, Construction and Improvement Services</b>					
4500 Building Acquisition and Construction Services - Original and Additional					
4600 Existing Building Improvement Services					
<b>Total Facilities Acquisition, Construction and Improvement Services</b>					
<b>5000 Other Expenditures and Financing Uses</b>					
5100 Debt Service / Other Expenditures and Financing Uses	19,560,143.73				
5200 Interfund Transfers - Out	26,799,665.00				
<b>Total Other Expenditures and Financing Uses</b>	<b>\$46,359,808.73</b>				
<b>TOTAL ACTUAL EXPENDITURES &amp; OTHER FINANCING USES</b>	<b>\$306,078,769.53</b>				

	<u>Capital Reserve (1431)(32)</u>	<u>Other Capital Projects Fund(39)</u>	<u>Debt Service(40)</u>	<u>Permanent(90)</u>	<u>Total</u>
<b>1000 Instruction</b>					
1100 Regular Programs - Elementary / Secondary					123,831,376.22
1200 Special Programs - Elementary / Secondary					37,518,075.03
1300 Vocational Education					4,324,342.73
1400 Other Instructional Programs - Elementary / Secondary					2,681,629.49
1500 Nonpublic School Programs					10,069.00
<b>Total Instruction</b>					<b>\$168,365,492.47</b>
<b>2000 Support Services</b>					
2100 Support Services - Students					12,470,312.24
2200 Support Services - Instructional Staff		4,733,091.00			14,764,554.42
2300 Support Services - Administration					13,864,635.71
2400 Support Services - Pupil Health					3,539,661.04
2500 Support Services - Business					1,442,897.79
2600 Operation and Maintenance of Plant Services					22,665,031.03
2700 Student Transportation Services		1,453,912.00			19,586,833.11
2800 Support Services - Central					2,500,365.57
2900 Other Support Services					237,812.60
<b>Total Support Services</b>		<b>\$6,187,003.00</b>			<b>\$91,072,103.51</b>
<b>3000 Operation of Non-Instructional Services</b>					
3200 Student Activities					3,263,202.77
3300 Community Services					3,205,165.05
<b>Total Operation of Non-Instructional Services</b>					<b>\$6,468,367.82</b>
<b>4000 Facilities Acquisition, Construction and Improvement Services</b>					
4500 Building Acquisition and Construction Services - Original and Additional		5,357,640.00			5,357,640.00
4600 Existing Building Improvement Services		8,423,064.00			8,423,064.00
<b>Total Facilities Acquisition, Construction and Improvement Services</b>		<b>\$13,780,704.00</b>			<b>\$13,780,704.00</b>
<b>5000 Other Expenditures and Financing Uses</b>					
5100 Debt Service / Other Expenditures and Financing Uses					19,560,143.73
5200 Interfund Transfers - Out					26,799,665.00
<b>Total Other Expenditures and Financing Uses</b>					<b>\$46,359,808.73</b>
<b>TOTAL ACTUAL EXPENDITURES &amp; OTHER FINANCING USES</b>		<b>\$19,967,707.00</b>			<b>\$326,046,476.53</b>



**PSERS Salary Data (Salary Data should relate to the General Fund only)**

<b>Amount Description</b>	<b>Amount</b>
Total Salary Base for salaries subject to PSERS withholding	145,201,864.00
Total Federally Funded salaries subject to PSERS withholding	22,747,320.00
	<hr/>

**Title I Expenditure Data**

<b>Amount Description</b>	<b>Amount</b>
Expenditures Funded with Current Title I Funds	594,302.86
Expenditures Funded with Carry over Title I Funds	
<b>Total Title I Expenditure Data</b>	<hr/> <b>\$594,302.86</b> <hr/>

**Title I ARRA Amount**

<b>Amount Description</b>	<b>Amount</b>
Portion of Total Title I Expenditures funded with ARRA Title I	<hr/>

**Benefits for Staff Relative to Collective Bargaining Agreements**

	OBJECT	COVERED	NOT COVERED	TOTAL
<b>10 General Fund</b>				
	211 Medical Insurance			
	212 Dental Insurance			
	215 Eye Care Insurance			
	216 Prescription Insurance			
	271 Self-Insurance Medical Benefits	15,679,706.00	895,036.00	16,574,742.00
	272 Self-Insurance Dental Benefits	1,100,987.00	65,313.00	1,166,300.00
	275 Self-Insurance Eye Care Benefits			
	276 Self-Insurance Prescription Benefits	5,895,820.00	336,548.00	6,232,368.00
	<b>FUND TOTAL</b>	<b>\$22,676,513.00</b>	<b>\$1,296,897.00</b>	<b>\$23,973,410.00</b>
<b>50 Enterprise Fund</b>	<b>No Self Insurance data to report</b>			
	211 Medical Insurance			
	212 Dental Insurance			
	215 Eye Care Insurance			
	216 Prescription Insurance			
	271 Self-Insurance Medical Benefits			
	272 Self-Insurance Dental Benefits			
	275 Self-Insurance Eye Care Benefits			
	276 Self-Insurance Prescription Benefits			
	<b>FUND TOTAL</b>			
<b>60 Internal Service Fund</b>	<b>No Self Insurance data to report</b>			
	211 Medical Insurance			
	212 Dental Insurance			
	215 Eye Care Insurance			
	216 Prescription Insurance			
	271 Self-Insurance Medical Benefits			
	272 Self-Insurance Dental Benefits			
	275 Self-Insurance Eye Care Benefits			
	276 Self-Insurance Prescription Benefits			
	<b>FUND TOTAL</b>			
<b>Total of All Funds</b>		<b>\$22,676,513.00</b>	<b>\$1,296,897.00</b>	<b>\$23,973,410.00</b>

LEA : 122092102 Central Bucks SD

Printed 10/27/2016 10:24:12 AM

Function	Special Education (Prior Year)	Nonspecial Education (Prior Year)	Total (Prior Year)	Special Education (Current Year)	Nonspecial Education (Current Year)	Total (Current Year)
2120 Guidance Services	2,347,104.14	4,264,456.81	6,611,560.95	2,558,668.11	4,648,847.68	7,207,515.79
2140 Psychological Services	1,544,562.16	171,618.02	1,716,180.18	1,617,807.17	179,756.35	1,797,563.52
2150 Speech Pathology and Audiology Services	1,754,706.53	194,967.39	1,949,673.92	1,764,161.57	196,017.95	1,960,179.52
2160 Social Work Services						
2260 Instruction and Curriculum Development Services	78,196.89	1,485,740.97	1,563,937.86	86,138.51	1,636,631.60	1,722,770.11
2350 Legal and Accounting Services	141,328.79	104,101.88	245,430.67	59,012.67	160,339.83	219,352.50
2420 Medical Services						
2440 Nursing Services						
2700 Student Transportation Services	1,727,004.87	16,451,993.77	18,178,998.64	1,722,618.01	16,410,203.10	18,132,821.11
<b>Total</b>	<b>\$7,592,903.38</b>	<b>\$22,672,878.84</b>	<b>\$30,265,782.22</b>	<b>\$7,808,406.04</b>	<b>\$23,231,796.51</b>	<b>\$31,040,202.55</b>

(PRINCIPAL AMOUNTS ONLY)

**ALL GOVERNMENTAL FUND TYPES**

	Short-Term Borrowing	General Obligation Bonds/Notes	Authority Building Obligations	Other Long-Term Debt	Other Post-Employment Benefits (OPEB)	Compensated Absences	Net Pension Liability	Total
1. Debt at Beginning of Fiscal Year		102,265,000.00			8,154,686.00	1,696,349.00	418,645,000.00	530,761,035.00
2. Additional Debt Incurred During Year					5,441,201.00	93,399.00	56,741,000.00	62,275,600.00
3. Retirements and Repayments		14,865,000.00			1,515,475.00			16,380,475.00
4. Debt at End of Fiscal Year		87,400,000.00			12,080,412.00	1,789,748.00	475,386,000.00	576,656,160.00
5. Accreted Interest at End Of Fiscal Year								
6. Total Debt and Accreted Interest		87,400,000.00			12,080,412.00	1,789,748.00	475,386,000.00	576,656,160.00
7. Current Portion P&I - Due within 1 year		16,059,194.00						16,059,194.00
8. Interest Paid during current fiscal year		4,695,144.00						4,695,144.00

(PRINCIPAL AMOUNTS ONLY)

**ALL PROPRIETARY FUND TYPES**

- 1. Debt at Beginning of Fiscal Year
- 2. Additional Debt Incurred During Year
- 3. Retirements and Repayments
- 4. Debt at End of Fiscal Year
- 5. Accreted Interest at End Of Fiscal Year
- 6. Total Debt and Accreted Interest
- 7. Current Portion P&I - Due within 1 year
- 8. Interest Paid during current fiscal year

**Total Principal and Interest Payments Made by Your School - All Funds**

Function	Fund		Principal (910)	Principal (920)	Interest (830)	Total (Principal +Interest)	Misc Other Uses (990)
5110	10	General Fund	14,865,000.00		4,695,143.73	19,560,143.73	
5110	20	Special Revenue Funds					
5110	30	Capital Projects Funds					
5110	40	Debt Service Fund					
5110	90	Permanent Fund					
5120	10	General Fund					
5120	20	Special Revenue Funds					
5120	30	Capital Projects Funds					
5120	40	Debt Service Fund					

<b>Total Debt Payments - Governmental Funds</b>			<b>\$14,865,000.00</b>		<b>\$4,695,143.73</b>	<b>\$19,560,143.73</b>	
---	--	--	------------------------	--	-----------------------	------------------------	--

Function	Fund		Principal (910)	Principal (920)	Interest (830)	Total (Principal +Interest)
5110	50	Enterprise Fund				
5110	60	Internal Service Fund				
5120	50	Enterprise Fund				
5120	60	Internal Service Fund				

<b>Total Debt Payments - Proprietary Funds</b>						
--	--	--	--	--	--	--

**Bond Details**  
**Governmental Funds**

Debt Category	Debt Issue Date (MM/YYYY)	Principal Amounts Only				Current Portion Due Within One Year (Principal and Interest)	Interest Paid During Fiscal Year
		Debt at Beginning of Fiscal Year	Additions	Reductions / Repayments	Debt at End of Fiscal Year		
General Obligation Bonds/Notes – CIB	11/2005	1,975,000.00		1,975,000.00			98,750.00
General Obligation Bonds/Notes – CIB	02/2007	33,125,000.00		5,005,000.00	28,120,000.00	5,341,000.00	1,653,250.00
General Obligation Bonds/Notes – CIB	10/2016	1,950,000.00		990,000.00	960,000.00	989,400.00	78,000.00
General Obligation Bonds/Notes – CIB	04/2011	5,735,000.00		2,310,000.00	3,425,000.00	2,516,300.00	231,800.00
General Obligation Bonds/Notes – CIB	04/2011	54,415,000.00		670,000.00	53,745,000.00	6,023,394.00	2,476,794.00
General Obligation Bonds/Notes – CIB	04/2011	5,065,000.00		3,915,000.00	1,150,000.00	1,189,100.00	156,550.00
Compensated Absences		1,696,349.00	93,399.00		1,789,748.00		
Other Post-Employment Benefits (OPEB)		8,154,686.00	5,441,201.00	1,515,475.00	12,080,412.00		
Net Pension Liability		418,645,000.00	56,741,000.00		475,386,000.00		
<b>Totals for Debt Entered:</b>		<b>\$530,761,035.00</b>	<b>\$62,275,600.00</b>	<b>\$16,380,475.00</b>	<b>\$576,656,160.00</b>	<b>\$16,059,194.00</b>	<b>\$4,695,144.00</b>

**General Fund (10)**

**Section 1: Tuition/Purchased Services as Reported within Expenditure Detail**

	<b>Amount</b>
Tuition Reported in General Fund Expenditures 1000-560	8,531,741.88
Purchased Services in General Fund Expenditures 1000-594 and 1000-597	6,558.33

<b>Section 1 Total</b>	<b>\$8,538,300.21</b>
------------------------	-----------------------

**Section 2: Tuition Paid to Institution Types During Fiscal Year**

	Tuition Paid For Nonspecial Education	Tuition Paid For Special Education	Total
1 1306 Institutions	13,051.75	289,743.61	302,795.36
2 Institutionalized Children's Programs		6,558.33	6,558.33
3 Juveniles Incarcerated in Adult Facilities	166,647.64		166,647.64
4 Residential Treatment Facilities			
5 Other Local Education Agencies			
6 Brick and Mortar Charter Schools			
7 Cyber Charter Schools	827,118.08	381,028.69	1,208,146.77
8 Career and Technology Centers	2,378,388.50	1,945,954.23	4,324,342.73
9 Approved Private Schools		460,626.49	460,626.49
10 PA Chartered Schools for the Deaf and Blind			
11 Private Residential Rehabilitative Institutions		16,466.21	16,466.21
12 Juvenile Detention Centers	50,819.31	39,549.76	90,369.07
13 Special Program Jointures			
14 Other Tuition Not Included Elsewhere In This Section	200,411.66	1,761,935.95	1,962,347.61

<b>Section 2 Total</b>	<b>\$3,636,436.94</b>	<b>\$4,901,863.27</b>	<b>\$8,538,300.21</b>
------------------------	-----------------------	-----------------------	-----------------------

1 .	<u>Student Transportation Services for Educational Field Trips</u>	342,092.92
2 .	<u>Student Transportation Services for Student Activities</u>	124,931.34
3 .	<u>Rental of Vehicles for Student Transportation Services</u>	
4 .	<u>Capital Reserve Funds</u>	1,444,443.43

Include only district-owned transportation expenditures paid from State or local money.  
 DO NOT include federal expenditures or payments to contract service providers.  
 Contracted transportation services should not be recorded on this schedule.



LEA : 122092102 Central Bucks SD

Printed 10/27/2016 10:24:16 AM

**Food Service / Cafeteria Operations Fund (51)**

**3000 Operation of Non-Instructional Services**

**Total**

**500 Other Purchased Services**

570 Food Service Management

4,253,268.70

**Total Other Purchased Services**

**\$4,253,268.70**

**Total 3000 Operation of Non-Instructional Services**

**\$4,253,268.70**

Food Service / Cafeteria Operations Fund (51)

3100 Food Services

Elementary

Secondary

Federal

Total

500 Other Purchased Services

570 Food Service Management

4,253,268.70

**Total Other Purchased Services**

**\$4,253,268.70**

**Total 3100 Food Services**

**\$4,253,268.70**

	<u>Food Service(51)</u>	<u>Child Care Operations(52)</u>	<u>Other Enterprise(58)</u>	<u>Internal Service(60)</u>	<u>Total</u>
<b>3000 <u>Operation of Non-Instructional Services</u></b>					
3100 Food Services	4,253,268.70				4,253,268.70
<b>Total Operation of Non-Instructional Services</b>	<b>\$4,253,268.70</b>				<b>\$4,253,268.70</b>
<b>TOTAL ACTUAL EXPENDITURES &amp; OTHER FINANCING USES</b>	<b>\$4,253,268.70</b>				<b>\$4,253,268.70</b>